

New Heights in Performance and Value





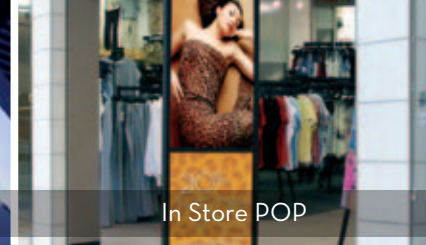
Window Signage



Vehicle Wraps



Backlits



In Store POP

## High-value, high-quality production printing.

Equipped with the industry's latest print head technology, the VersaArt RE-640 64-inch inkjet printer features variable dot control. Its unique design produces drops of seven different sizes to accentuate all of the fine details in your image. A dual CMYK, mirrored ink configuration (CMYKKYMC) virtually eliminates banding during bi-directional printing. Roland Intelligent Pass Control further enhances image quality by minimizing ink bleeding at the edge of each pass. As a result, you get high-density printing with rich, saturated colors, beautiful photographic reproductions, smooth gradations and superb contrast even in the fastest print mode of 248 sqft/hr (23.1 sqm/hr).

“Once we saw the quality and accuracy of the VersaArt’s output, we were able to leave it printing unattended while we ran the shop. Our banners and signs come out beautifully. The VersaArt really performs when we need it!”

Tom Vasin  
Vasin Sign Solutions, Laguna Hills, CA



Posters



Window Signage



See more applications by visiting  
[www.rolanddga.com/re](http://www.rolanddga.com/re).



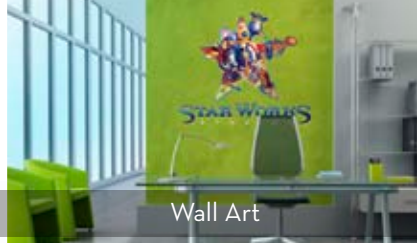




Outdoor Banners



Outdoor Signs



Wall Art



Giclée Artwork



Watch videos of the RE-640 in action at [www.rolanddga.com/re](http://www.rolanddga.com/re).

### Powerful Eco-SOL MAX ink produces vibrant, durable graphics

Delivering high color density and a wide gamut, Eco-SOL MAX ink performs on both coated and uncoated media, including backlit film. Fast-drying and scratch-resistant, Eco-SOL MAX produces prints that dry quickly for easy handling throughout the production and finishing processes. For maximum convenience and comfort, Eco-SOL MAX is packaged in easy, no-mess 220 mL and 440 mL cartridges, and is virtually odorless.

### Advanced media handling and drying systems

The VersaArt RE-640 ensures precision media feeding throughout long production runs and supports media rolls up to 88 lbs. A built-in two-stage, integrated heater system accommodates a wide range of media and precisely controls the proper amount of heat for each application. For unattended roll-to-roll printing, an optional take-up system is available.

### Roland On Support

Roland OnSupport is an online production monitor that enables you to track production remotely, sending production updates via email when ink is low or a print job has completed.

### Energy Star Certified

The RE-640 is Energy Star certified and operates without an additional power supply on a standard household electrical outlet. VersaArt technology is also certified by Roland's Eco-Label system, an ISO 14021 Type II label certifying compliance with a company's internal environmental standards.

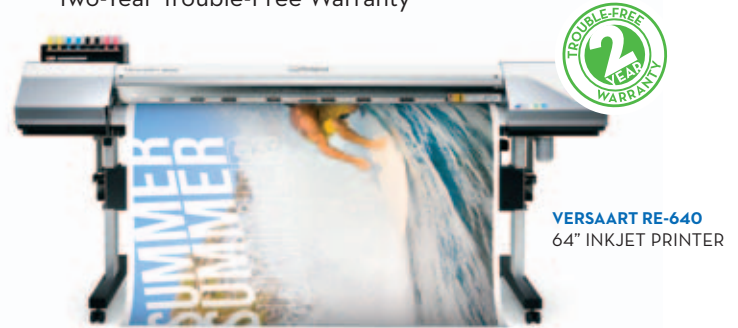




## VERSAART RE-640 INKJET PRINTER

- Maximum print speed of 248 sqft/hr (23.1 sqm/hr)
- Four-color, dual CMYK ink configuration
- Advanced Roland Eco-SOL MAX ink
  - > Vibrant graphics are scratch, water and UV resistant up to 3 years without lamination\*
  - > Choose from 220 mL or 440 mL cartridges
  - > Virtually odorless
- Outstanding image quality
  - > Up to 1440x720 dpi
  - > Roland Intelligent Pass Control for flawless results, free of banding
- Optional automated take-up system for overnight and unattended printing
- Supports heavy media rolls up to 88 lbs.
- Roland Intelligent Pass Control™ technology for unparalleled image quality at the highest print speeds

- Roland VersaWorks RIP software
  - > Ensures precise color management
  - > Includes the Roland Color System for spot color matching
  - > Manages up to four Roland devices on a network
  - > Wide ICC profile support
  - > Variable data printing
  - > Supports print/cut applications with GX series cutters
- Energy Star certified 
- Roland OnSupport for remote production monitoring
- Two-Year Trouble-Free Warranty\*\*



## PRODUCT SPECIFICATIONS

For detailed features and specifications, visit [www.rolanddga.com/re](http://www.rolanddga.com/re).

Model		RE-640
Printing method		Piezoelectric inkjet / Grit roller feed
Acceptable media	Width Thickness Weight Roll outer diameter Core diameter	10.2 to 64 in. (259 to 1625 mm) Maximum 39 mil (1.0 mm) with liner Maximum 88 lb. (40 kg) Maximum 8.3 in. (210 mm) 3 in (76.2mm)
Printing width		Maximum 63.6 in (1615 mm)
Maximum Printing Speed		248 sqft/hr (23.1 sqm/hr) in CMYK High Speed mode
Ink cartridges	Type Capacity Color Configuration	Roland ECO-SOL MAX INK 220 cc or 440 cc 4 colors (Cyan, Magenta, Yellow, Black) CCMMYYKK
Printing resolutions		maximum 1440x720 dpi
Distance accuracy		Error of less than ±0.3% of distance traveled, or ±0.3 mm, whichever is greater
Interface		Ethernet (10BASE-T/100BASE-TX, automatic switching)
Power-saving function		Automatic sleep feature
Power supply		AC 100 to 120 V ±10%, 8.2A, 50/60 Hz or AC 220 to 240 V ±10%, 4.2A, 50/60 Hz
Power consumption	During operation Sleep mode	Approx. 1,080 W Approx. 14.8 W
Dimensions (with stand)		101.4 (W) x 27.8 (D) x 46.3 (H) in (2,575 (W) x 705 (D) x 1,175 (H) mm)
Weight (with stand)		298 lbs (135 kg)
Environment	Power on Power off	Temperature: 15° to 32°C (59 to 90°F) [20°C (68°F) or more recommended] / Humidity: 35 to 80%RH (no condensing) Temperature: 5 to 40°C (41 to 104°F), humidity: 20 to 80%RH (no condensation)
Included items		Stand, power cord, media clamps, media holder, replacement blade for sheet cut, VersaWork RIP, User's Manual, etc.

Specifications subject to change.

\* Outdoor durability is based on accelerated weather tests. Results may vary depending upon location and application. Dry times vary depending on specific media characteristics. Lamination may be required for some applications or environmental conditions.

\*\* Registration within 60 days and continuous exclusive use of Roland Inks during the first two years of ownership is required to qualify for the free second year of limited warranty coverage. Additional Terms and Conditions apply.

Get social with us.



Imagine. 

FOR COMPLETE PRODUCT SPECIFICATIONS AND FEATURES, OR TO REQUEST A SAMPLE PRINT, CALL 800-542-2307 OR VISIT [WWW.ROLANDDGA.COM/RE](http://WWW.ROLANDDGA.COM/RE)  
 ROLAND DGA CORPORATION | 15363 BARRANCA PARKWAY | IRVINE, CALIFORNIA 92618-2216 | 800.542.2307 | 949.727.2100 | CERTIFIED ISO 9001:2008  
 RDGA-RE-01 May 2012 Roland DGA Corp. has licensed the MMP technology from the TPL Group.