

Canon



CORPORATE SOLUTIONS



 **Color
imageRUNNER®**
LBP5975
LBP5970

 **Color
imageRUNNER®**
LBP5360

 **imageRUNNER®**
LBP3460

CORPORATE SOLUTIONS

imageRUNNER PERFORMANCE FOR DESKTOP PRODUCTIVITY

Paramount productivity, outstanding capabilities, and uncompromising output in four impressive workgroup laser beam printers.



 **Color**
imageRUNNER®
LBP5975
LBP5970

 **Color**
imageRUNNER®
LBP5360

 **imageRUNNER®**
LBP3460

Say goodbye to the days of relying on different vendors to meet your desktop and workgroup document production needs and hello to faster output speeds, available compact integrated finishing, increased energy efficiency, and simplified operation. The Canon imageRUNNER LBP Series delivers the productivity and reliability you need in a single, scalable solution from one of the world's most respected names in document imaging.

The Canon Color imageRUNNER LBP5975/5970/5360 and imageRUNNER LBP3460 models benefit from innovations refined over decades of research and development. Many of the same technologies that enable high quality and productivity in the renowned imageRUNNER line are powering the Canon imageRUNNER LBP Series. Never again will you have to sacrifice speed or capabilities when choosing a compact desktop laser printer for your office.

A HIGHER STANDARD FOR DESKTOP PRODUCTIVITY...

Four strong models that meet the demands of any corporate workgroup

The Canon Color imageRUNNER LBP5975/5970/5360 and imageRUNNER LBP3460 can handle a broad spectrum of environments. Offering a variety of different output speeds and capabilities, there's a device to address the need for color output, large paper sizes, and even basic finishing. Each model includes port interfaces for 10/100Base-TX Ethernet (RJ-45) to provide network printing and USB 2.0 for local connectivity.



Color imageRUNNER LBP5975/LBP5970

COLOR imageRUNNER LBP5975/LBP5970

- **Print Speed:** Up to 31/30 ppm (monochrome/color, letter)
- **Resolution:** Up to 1200 x 1200 dpi*
- **Print Drivers:** UFR II/PCL 5c/6 (standard), PostScript® 3™ emulation (optional)
- **Finishing:** Corner Stapling (LBP5975 model only)
- **Paper Sizes:** Up to ledger (11" x 17")
- **Paper Capacity:** Up to 320 sheets (standard)/1,970 sheets (maximum)



Color imageRUNNER LBP5360

COLOR imageRUNNER LBP5360

- **Print Speed:** Up to 22/22 ppm (monochrome/color, letter)
- **Resolution:** 600 x 600 dpi
- **Print Drivers:** UFR II/PCL 5c (standard)
- **Paper Sizes:** Up to legal (8.5" x 14")
- **Paper Capacity:** Up to 350 sheets (standard)/850 sheets (maximum)

imageRUNNER LBP3460

- **Print Speed:** Up to 35 ppm (monochrome, letter)
- **Resolution:** 600 x 600 dpi
- **Print Drivers:** UFR II/PCL 5e/6 (standard)
- **Paper Sizes:** Up to legal (8.5" x 14")
- **Paper Capacity:** Up to 350 sheets (standard)/850 sheets (maximum)



imageRUNNER LBP3460

* Printing at 1200 dpi on Color imageRUNNER LBP5975/5970 models may result in reduced engine speed.

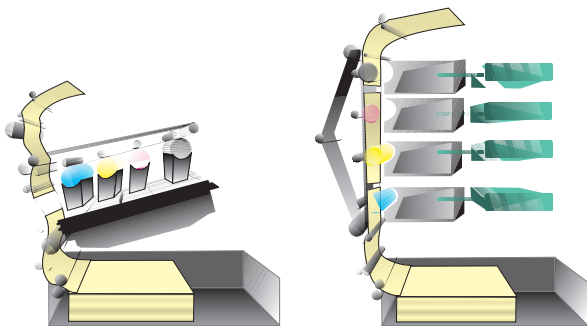
ADVANCED TECHNOLOGY FOR SUPERIOR DOCUMENTS

CANON ENGINE INNOVATIONS FOR PEAK PERFORMANCE

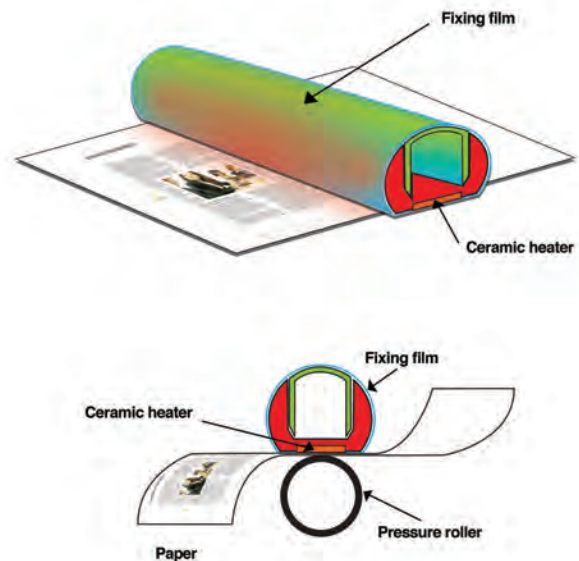
The Canon imageRUNNER LBP Series delivers the desktop productivity and advanced technology users demand in four exceptionally compact models. The Color imageRUNNER models utilize robust four-drum engine technology and Canon's patented Color RAPID Fusing System to produce beautiful high-speed color and monochrome documents. The Canon imageRUNNER LBP3460 model uses the patented RAPID Fusing System to quickly output crisp black-and-white documents.

These imaging innovations have virtually no warm-up time and faster printout times with less heat. Each model is ENERGY STAR® qualified, and the Color imageRUNNER LBP5975/5970 devices are notably low by using 1W or less in Sleep Mode.

The Canon imageRUNNER LBP Series is powered by the same high-performance system architecture developed for Canon's advanced imageRUNNER line, delivering extraordinary productivity, robust functionality, and enhanced processing capacity. The compact size and fast first-printout times of the Color imageRUNNER LBP5975/5970 are realized through a revolutionary short vertical paper path design.



Short Vertical Paper Path vs. Conventional Paper Path



Rapid Fusing Technology

REMARKABLE IMAGE QUALITY

The Color imageRUNNER LBP5975/5970 devices utilize an innovative compact 4-in-1 laser beam unit to achieve true 1200-dpi output in Super Fine Mode for increased image clarity and gradients, or Fine Mode for precise graphics at 600 dpi. Canon's proprietary Advanced Smoothing Technology (AST) can further enhance image quality by smoothing the edges of printed text and graphics. The Color imageRUNNER LBP5360 model and imageRUNNER LBP3460 model both deliver crisp output at up to 600 dpi, equivalent in appearance to 2400 x 600 dpi.

imageRUNNER PRODUCTIVITY FEATURES

COMPACT FINISHING CAPABILITIES

The Color imageRUNNER LBP5975 device includes a basic corner-stapling feature as standard. The compact integrated stapling capability makes it convenient for users to quickly and easily produce multipage documents from the print driver. The finisher can staple up to 15 sheets of letter or ledger paper at a time in a variety of corner positions.*

ALTERNATIVE OUTPUT FEATURES

The Color imageRUNNER LBP5975/5970 models enable users to print PDF, TIFF, and JPEG files through the Remote UI utility without having to install print drivers. Users can even print documents by sending them via e-mail to a dedicated POP-based e-mail account that has been specifically configured for the device, enabling simple output for guest users or printing documents remotely.**

OPTIMIZED DOCUMENT PROCESSING

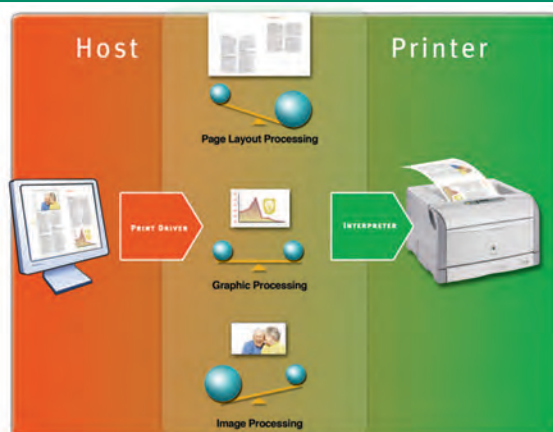
All four models in the Canon imageRUNNER LBP Series include the UFR II Print Controller, which is optimized to produce high-speed color and monochrome documents. It automatically distributes data processing between the print driver on the user's desktop computer and the imageRUNNER LBP device.

When users print a document, the intelligent driver architecture determines the optimal balance of processing between the desktop computer and the imageRUNNER LBP device by analyzing the layout and graphic components of each page. This unique approach maintains exceptionally high print performance on even complex documents that include images, graphics, and text. The embedded print controller on all models also supports PCL as standard.



Stapled Document Output

UFR II Printing Technology



* When the staple feature is used, print speed may be reduced. Refer to specifications for available corner staple positions.

** Requires optional PostScript 3 ROM, Hard Disk Drive Kit, and a minimum of 256MB of additional RAM.

ROBUST SUPPORT FOR ADVANCED WORKFLOWS

ADVANCED APPLICATION SUPPORT

The Color imageRUNNER LBP5975/5970 devices can meet the advanced applications requirements of environments such as education and medical through options for PostScript 3 emulation and bar code printing. The PostScript 3 option delivers accurate rasterization of PS3 print data, while the Barcode Printing option ensures the accurate printing of bar codes.

CONSISTENT imageRUNNER PRINT DRIVER ARCHITECTURE

Canon has developed a consistent print driver that spans the entire imageRUNNER line to simplify and standardize the task of producing documents for users. The drivers are compatible with Windows® and Macintosh® environments, and provide support for UFR II, PCL5c/5e/6 and optional PS3 emulation page description languages to ensure high productivity.* Users can quickly switch between different page description language (PDL) based on the types of documents being produced. Booklets can also be easily produced using the auto-imposition feature and finished offline.

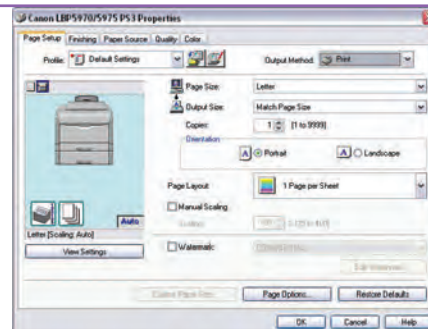
DOCUMENT STORAGE CAPABILITIES

Color imageRUNNER LBP5975/5970/5360 models offer a convenient feature to store frequently used print jobs in different boxes with the Hard Disk Drive option. Up to 100 print jobs can be stored on the device and printed from the Remote UI Web-based utility.

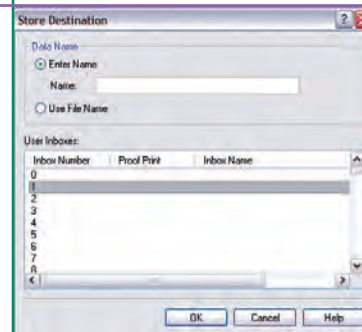
RIP-ONCE TECHNOLOGY

When the Hard Disk Drive Option is installed on the Color imageRUNNER LBP5975/5970/5360 models, documents can be set to RIP once and then stored for high-speed printing of large or complicated print jobs at a later time.

Printer Driver User Interface



Print Box Storage Capability



* The Macintosh environment is only supported through the UFR II and optional PostScript 3 emulation driver. The PostScript 3 emulation option is available for imageRUNNER LBP5975/5970 devices.

AN EASY-TO-USE, COMPACT DEVICE FOR EVERY USER

FRONT-LOAD ACCESS

All models in the Canon imageRUNNER LBP Series have been designed with front-load access to consumables in mind, so they can easily be situated in a corner or previously unusable space.

SIMPLIFIED MAINTENANCE

The Canon imageRUNNER LBP Series provides for quick and easy maintenance of customer-replaceable components. The Color imageRUNNER LBP5975/5970 devices use a drum and toner cartridge for each color, dramatically simplifying the replacement of consumables. The Color imageRUNNER LBP5360 model utilizes four distinctive all-in-one cartridges that combine the drum, developer, waste toner box, and toners in a single unit. The imageRUNNER LBP3460 model offers the option of a standard or high-yield all-in-one cartridge, combining the black toner and drum in one unit.

IMPRESSIVE PAPER HANDLING

All models in the Canon imageRUNNER LBP Series feature auto-duplexing capabilities to produce double-sided documents with nonstop productivity. The standard cassettes support a variety of paper types and sizes, and offer even greater flexibility in media types with the standard stack bypass tray. For larger online paper capacities, each model offers an option for additional cassettes.

ELECTRONIC DOCUMENTATION

All models in the Canon imageRUNNER LBP Series have CD-based documentation, so users won't have to waste time scanning through large printed manuals. The electronic documentation features powerful search tools to help users locate the answers they need, quickly and easily.

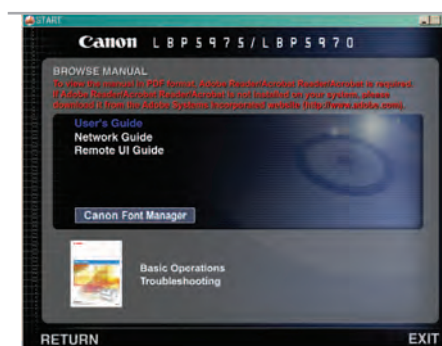


Front-load Access (imageRUNNER LBP5360 shown)



Easy replacement of consumables
(imageRUNNER LBP5975/5970 shown)

Interface of electronic documentation



imageRUNNER LBP SERIES SECURITY

DATA SECURITY

When the internal 30GB Hard Disk Drive option is installed on Color imageRUNNER LBP5975/5970 models or the 20GB HDD option for the Color imageRUNNER LBP5360 device, the Hard Disk Drive Erase feature can protect your data by completely erasing all traces of deleted data by automatically overwriting that portion of the drive. Enhanced network infrastructure management is also achieved through support for IPv6.*

DOCUMENT SECURITY

Color imageRUNNER LBP5975/5970/5360 models offer the ability to protect printed documents with the Secured Print and Encrypted Secured Print functions when the Hard Disk Drive option is installed. The Secured Print function stores documents on the device until the user-defined password is entered for printing. For an added layer of security, the Encrypted Secured Print feature encrypts and password-protects documents before sending to the device over the network.

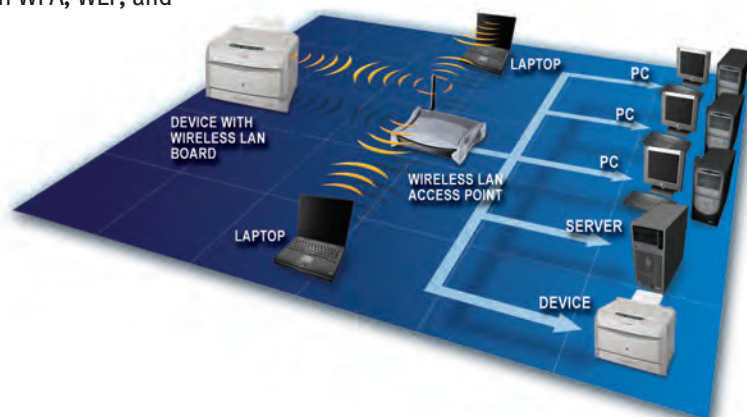
WIRELESS LAN CONNECTIVITY

The imageRUNNER LBP5975/5970 models can use Canon's new Wireless LAN Kit option—the latest in wireless technology—to connect to a Local Area Network. Supported standards include 802.11g and 802.11b for up to 54 Mbps and 11 Mbps transmission speeds, respectively, and compliance with WPA, WEP, and WEP2 security encryption.

Hard Disk Drive Kit



Encrypted Secured Print Diagram



Wireless LAN Kit

*Support for IPv6 is limited to Color imageRUNNER 5975/5970 models only.

...AND ADMINISTRATION FEATURES

REMOTE UI (USER INTERFACE)

The standard Remote UI utility gives users the ability to check device status, track current job progress, monitor paper and toner levels, and administer boxes of stored documents on a Canon imageRUNNER LBP Series device through a Web browser.

Remote UI Utility



DEVICE USAGE ACCOUNTING

The Color imageRUNNER LBP5975/5970 models provide administrators with the ability to track total device output through the same counter system technology and functionality used in imageRUNNER MFP devices. Usage accounting reports can be easily printed from the device's control panel or accessed via the network with the Remote UI utility. Usage can also be monitored enterprise-wide with Canon's imageWARE Enterprise Management Console and imageWARE Accounting Manager.

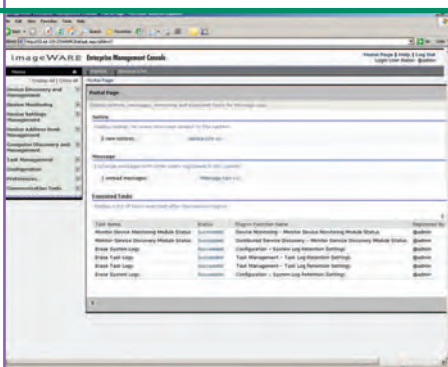
Meter Capture from Remote UI

Type	Total
101: Total	1000
100: Total (Black 1)	117
621: Print (Full Color + Single Color) (print)	139
622: Print (Full Color + Single Color) (copy)	1000

COMPREHENSIVE DEVICE MANAGEMENT

Canon imageWARE Enterprise Management Console (EMC) is a Web-based utility that facilitates centralized management of multiple imageRUNNER or other-branded devices. Built upon an extensible framework, it enables remote management of device settings, discovery of new devices using automated tasks, and device error notifications via e-mail. Administrators can also push the print drivers to PC-based desktop computers for rapid deployment.

imageWARE Enterprise Management Console



SPECIFICATIONS



MAIN UNIT

Type:	Desktop Color Laser Printer
Copying Method:	Electrophoto method (Color RAPID Fusing System)
Developing System:	Dry Dual Component Developing System
Memory:	Standard 256MB RAM Maximum 768MB RAM*
Hard Disk Drive:	Optional 30GB
Network Interface	
Connections:	10/100Base-TX (RJ-45) Wireless LAN (IEEE 802.11)**
Other Interface:	USB 2.0 Hi-Speed/USB Full-Speed (USB 1.1 Equivalent)
User Interface:	LCD 16 Characters x 1 Line 11 LED Indicators 9 Operation Keys
First-Print Time	
LBP5975:	8.9 Seconds (B&W) 10.4 Seconds (Full Color)
LBP5970:	7.5 Seconds (B&W) 9.0 Seconds (Full Color)
Warm-Up Time:	0 Seconds from Standby, 30 Seconds or Less from Power On
Print Speed (B/W, Color):	31/30 ppm (Letter)
CPU:	R4000 Series (400 MHz***), MIPS64 Series (533 MHz ***)
Command Language:	UFR II/PCL5c/6
Optional PDL Support:	PostScript 3™ Emulation (PS ROM 98B/98C)
Print Resolution	
UFR II:	1200 dpi x 1200 dpi [§] (Super Fine Mode) 2400-dpi equivalent x 600 dpi (Fine Mode)
PCL5c/6:	2400-dpi equivalent x 600 dpi
PS3 (Optional):	1200 dpi x 1200 dpi [§] (Text and Line Only) 2400-dpi equivalent x 600 dpi
Engine Resolution:	1200 dpi x 1200 dpi
Printer Drivers	
UFR II:	Windows (Windows 2000/XP/ Vista®/Server 2003/Server 2008) Citrix MetaFrame Macintosh (OS 10.3.3 or later) Novell NetWare® v3.20/4.1/4.11/ 4.20/5.0/5.1/6.0/6.5 (IPX/SPX)
PCL5c/6:	Windows (Windows 2000/XP/ Vista/Server 2003/Server 2008) Citrix MetaFrame

PS3 Emulation:	Windows (Windows 2000/XP/Vista/ Server 2003/Server 2008) Citrix MetaFrame Macintosh (OS 10.3.3 or later)
Halftone:	256 Gradations (Continuous-Tone)
Paper Sources	
Standard:	230-Sheet Paper Cassette (20 lb. Bond) 90-Sheet Multi-Purpose Tray
Optional:	550-Sheet x Up to 3 Paper Cassettes
Maximum:	1,970 Sheets
Paper Sizes	
Cassettes:	Ledger, Legal, Letter, Executive
Multi-Purpose Tray:	Ledger, Legal, Statement, Letter, Executive, Custom Sizes (Width: 3-7/8" to 5-3/4" Length: 5-1/2" to 18"); Long Size Paper (Width: 8-3/8" to 11-3/4" Length: 18" to 47-1/4") and Envelopes
Acceptable Paper Weight	
Cassettes:	17 lb. Bond to 28 lb. Bond
Multi Purpose Tray:	17 lb. Bond to 80 lb. Cover
Maximum Paper Size:	11" x 17" (305 x 457mm Paper Size)
Output Capacity:	Approximately 250 Sheets (20 lb. Bond)
Paper Output:	Face-Down
Duplexing:	Standard Automatic Trayless Duplexing (Executive to 11" x 17")
Finishing Capability: (Available on LBP5975 only)	Corner Stapling Finisher
Available Corner Staple Positions	
Letter:	Portrait-Upper Left, Lower Right Landscape-Upper Right, Lower Left
Executive:	Portrait-Upper Left, Lower Right Landscape-Upper Right, Lower Left
Ledger:	Portrait-Upper Right, Lower Left Landscape-Upper Left, Lower Right
Finishing Output Capacity:	Up to 15 Pages Per Set (Letter/Executive/Ledger)
Finishing Acceptable Paper Weight:	17 lb. Bond to 28 lb. Bond
Dimensions (H x W x D)	
LBP5975:	17-1/4" x 21" x 25" (Main Unit)
LBP5970:	15" x 21" x 25" (Main Unit)

Installation Space (W x D):	21 1/2" x 37 3/5" (When Multi-Purpose Tray is Extended)
Weight	
LBP5975:	Approximately 115.7 lb. (52.5kg) [†]
LBP5970:	Approximately 106.9 lb. (48.5kg) [†]
Power Supply:	120V - 127V 60Hz
Power Consumption	
Operating:	Approximately 653W (Average)
Standby:	Approximately 34W (Average)
Power Save Mode:	Approximately 14W (Average)
Deep Sleep Mode:	Approximately 1W (Average)
Plug:	NEMA 5-15P
Toner (Estimated Yield):	Black: 10,000 images @ 5% coverage ^{††} Full Color: 6,000 images @ 5% coverage ^{††}

OPTIONAL ACCESSORIES

Paper Feeder Unit-PF-98B^{†††}

Paper Sizes:	Ledger, Legal, Letter, Executive, Custom Sizes (Width 8-3/8 to 11-3/4"; Length 8-3/8" to 17")
Paper Cassettes	
Capacity:	550 Sheets x 3 Cassettes (20 lb. Bond)
Dimensions (H x W x D):	5-5/8" x 21-1/2" x 27-1/2"
Weight:	Approximately 24.3 lb. (11kg)

Other Optional Accessories

- PostScript 3 Emulation/Barcode Printing ROM A-98B*
- PostScript 3 Emulation ROM A-98C*
- Wireless Network Interface Board NB-W2
- Hard Disk Kit HD-98B
- Cabinet-W1 (Small)*
- Cabinet-X1 (Large)*
- Expansion RAM ER-128A*
- Expansion RAM ER-256A*
- Expansion RAM ER-512A*

* One memory slot available for expanding memory.

** Through optional Wireless LAN Kit.

*** The upper limit of the frequency range.

§ If 1200-dpi print is selected, engine speed will be reduced.

† Excluding the Toner Cartridges and Drum Cartridges.

†† When printing letter-sized paper at 5% page coverage with the default print density settings.

††† Up to three additional paper cassettes can be added.

• PostScript 3 emulation/Barcode Printing ROM A-98B and PostScript 3 emulation ROM A-98C cannot be installed together.

▪ Up to three additional paper cassettes can be installed when Cabinet-W1 is attached.

• Up to one additional paper cassette can be installed when Cabinet-X1 is attached.

SPECIFICATIONS



Hard Disk KIT HD-93



LBP5360 Main Unit



Paper Feeder Unit PF-93

MAIN UNIT

Type:	Desktop Color Laser Printer
Printing Method:	Electrophoto Method (Color RAPID Fusing System)
Developing System:	Dry Dual Component Developing System
Memory:	Standard 128MB RAM Maximum 384MB RAM*
Hard Disk Drive:	Optional 20GB
Network Interface Connections:	Parallel Connector (IEEE1284 Compatible) 10/100Base-TX (RJ-45)
Other Interface:	USB 2.0 Hi-Speed/USB Full-Speed (USB 1.1 Equivalent)
User Interface:	LCD 16 Characters x 1 Line 8 LED Indicators 8 Operation Keys
First-Print Time:	10.1 Seconds (B/W) 10.1 Seconds (Color)
Warm-Up Time:	0 Seconds From Standby, 45 Seconds or Less After Powering On
Printing Speed (B/W, Color):	22/22 ppm (Letter)
CPU:	PowerPC 750CXR (400MHz**)
Command Language:	UFR II, PCL5c
Print Resolution UFR II/PCL5c:	600 x 600 dpi 2400-dpi equivalent x 600 dpi
Engine Resolution:	600 x 600 dpi
Printer Drivers UFR II:	Windows (Windows 2000/XP/Vista/Server 2003/Server 2008), Citrix MetaFrame, Macintosh (OS 10.2.8 or later)

PCL5c:	Windows (Windows 2000/XP/Vista/Server 2003/Server 2008), Citrix MetaFrame
Halftone:	256 Gradations (Continuous-Tone)
Paper Sources Standard:	250-Sheet Paper Cassette (20 lb. Bond) 100-Sheet Multi-Purpose Tray
Optional:	500-Sheet x Up To One Paper Cassette
Maximum:	850 Sheets
Paper Sizes Cassettes:	Legal, Letter, Executive, Foolscap, Custom Sizes (Width: 5-7/8" to 8-1/2"; Length: 8-3/8" to 8-1/2")
Multi-Purpose Tray:	Legal, Statement, Letter, Executive, Foolscap, Index Card, Custom Sizes (Width: 3" to 8-1/2"; Length: 5" to 14") and Envelopes
Acceptable Paper Weight Cassettes:	17 lb. Bond to 32 lb. Bond
Multi-Purpose Tray:	17 lb. Bond to 80 lb. Cover
Maximum Paper Size:	Legal (216 x 355.6mm)
Output Capacity:	Approximately 250 Sheets (20 lb. Bond)
Paper Output:	Face-Down
Duplexing:	Standard Automatic Trayless Duplexing (Legal, Letter, Foolscap)
Dimensions (H x W x D):	17-1/4" x 16-1/4" x 17-7/8" (Main Unit)
Installation Space (W x D):	16-1/4" x 27-7/8" (When Multi-Purpose Tray is extended)

Weight:	Approximately 48.5 lb. (22kg)***
Power Supply:	100V – 127V, 50Hz/60Hz
Power Consumption Operating:	Approximately 460W (Average)
Standby:	Approximately 48W (Average)
Power Save Mode:	Approximately 16W (Average)
Plug:	NEMA 5-15P
Toner (Estimated Yield):	Black: 6,000 Images at 5% Coverage† Full Color: 6,000 Images at 5% Coverage†

OPTIONAL ACCESSORIES

Paper Feeder Unit PF-93††

Paper Sizes:	Legal, Letter, Executive, Foolscap, Custom Sizes (Width: 5-7/8" to 8-1/2"; Length: 8-3/8" to 8-1/2")
Paper Cassettes Capacity:	500 Sheets (20 lb. Bond)
Dimensions (H x W x D):	6-5/8" x 16" x 22-3/8"
Weight:	Approximately 11 lb. (5.0kg)

Other Optional Accessories

- Hard Disk Kit HD-93
- Expansion RAM ER-128
- Expansion RAM ER-256

* One memory slot available for expanding memory.

** The upper limit of the frequency range.

*** Excluding the Toner Cartridges and Drum Cartridges.

† When printing letter-sized paper at 5% page coverage with the default print density settings.

†† One additional paper cassette can be added.

Specifications

MAIN UNIT

Type:	Desktop Laser Printer
Copying Method:	Electrophoto Method (RAPID Fusing System)
Developing System:	Dry Dual Component Developing System
Memory:	Standard 64MB RAM Maximum 320MB RAM*
Network Interface	
Connections:	10/100Base-TX (RJ-45)
Other Interface:	USB 2.0 Hi-Speed/USB Full-Speed (USB 1.1 Equivalent)
User Interface:	LCD 16 Characters x 1 Line 8 LED Indicators 8 Operation Keys
First-Print Time:	8.0 Seconds
Warm-Up Time:	0 Seconds From Standby, 9 Seconds After Powering On
Print Speed:	35 ppm (Letter)
CPU:	R4000-333MHz**
Command Language:	UFR II/PCL5e/PCL6
Print Resolution	
UFR II/PCL5e/6:	600 x 600 dpi 2400-dpi equivalent x 600 dpi
Engine Resolution:	600 x 600 dpi
Printer Drivers	
UFR II:	Windows (Windows 2000/XP/Vista/Server 2003/Server 2008), Citrix MetaFrame Macintosh (OS 10.2.8 or later)
PCL5c/6:	Windows (Windows 2000/XP/Vista/Server 2003/Server 2008), Citrix MetaFrame
Halftone:	256 Gradations (Continuous-Tone)
Paper Sources	
Standard:	250-Sheet x One Paper Cassette (20 lb. Bond) 100-Sheet Multi-Purpose Tray
Optional:	500-Sheet x Up To One Paper Cassette
Maximum:	850 Sheets



LBP3460 Main Unit



Paper Feeder Unit PF-36

Paper Sizes	
Drawers:	Legal, Letter, Executive, Custom Sizes (Width: 5-7/8" to 8-1/2"; Length: 8-3/8" x 14")
Multi-Purpose Tray:	Legal, Letter, Executive, Statement, Index Card, Custom Sizes (Width: 3" to 8-1/2"; Length: 5" to 14") and Envelopes
Acceptable Paper Weight	
Cassettes:	17 lb. Bond to 35 lb. Bond
Multi-Purpose Tray:	17 lb. Bond to 65 lb. Cover
Maximum Paper Size:	Legal (216 x 355.6mm)
Output Capacity:	Approximately 250 Sheets (Face-Down) Approximately 50 Sheets (Face-Up)
Paper Output:	Face-Down/Face-Up
Duplexing:	Standard Automatic Trayless Duplexing (Legal, Letter)
Dimensions (H x W x D):	10-3/4" x 17-5/8" x 16-1/4" (Main Unit)
Installation Space (W x D):	17-5/8" x 24-1/2" (when Multi-Purpose Tray is extended)
Weight:	Approximately 35.5 lb. (16.1kg)***
Power Supply:	100 – 127V, 50/60Hz
Power Consumption	
Operating:	Approximately 580W (Average)
Standby:	Approximately 10W (Average)
Deep Sleep Mode:	Approximately 7W (Average)

Plug:	NEMA 5-15P
Toner (Estimated Yield):	Black (Cartridge 110): 6,000 Images at 5% Coverage† Black (Cartridge 110 II): 12,000 Images at 5% Coverage†

OPTIONAL ACCESSORIES

Paper Feeder PF-36††

Paper Sizes:	Legal, Letter, Executive, Custom Sizes (Width: 5-7/8" to 8-1/2"; Length: 8-3/8" x 14")
Paper Cassette Capacity:	500 Sheets (20 lb. Bond)
Dimensions (H x W x D):	6-5/8" x 17-5/8" x 18-7/8"
Weight:	Approximately 12.4 lb. (5.6kg)

Other Optional Accessories

- Expansion RAM ER-64
- Expansion RAM ER-128
- Expansion RAM ER-256

* One memory slot available for expanding memory.

** The upper limit of the frequency range.

*** Excluding the Toner Cartridges and Drum Cartridges.

† When printing letter-sized paper at 5% page coverage with the default print density settings.

†† One additional paper cassette can be added.

Canon
image*ANYWARE*

1-800-OK-CANON
www.usa.canon.com

Canon U.S.A., Inc.
One Canon Plaza
Lake Success, NY 11042

As an ENERGY STAR® Partner, Canon U.S.A., Inc. has determined that these products meet the ENERGY STAR guidelines for energy efficiency. ENERGY STAR and the ENERGY STAR mark are registered U.S. marks. Windows and Windows Vista are registered trademarks of Microsoft Corporation in the United States and/or other countries. Macintosh is a registered trademark of Apple Computer, Inc. PostScript is a registered trademark or trademark of Adobe Systems Incorporated in the United States and/or other countries. Novell and NetWare are registered trademarks of Novell, Inc. in the United States and other countries. CANON, IMAGERUNNER, and the GENUINE logo are registered trademarks of Canon Inc. in the United States and may also be registered trademarks or trademarks in other countries. IMAGEWARE is a registered trademark of Canon U.S.A., Inc. in the United States and is a trademark of Canon Inc. in certain other countries. IMAGEANYWARE is a trademark of Canon. All other referenced product names and marks are trademarks of their respective owners and are hereby acknowledged.

Specifications and availability subject to change without notice.
©2010 Canon U.S.A., Inc. All rights reserved.

