

Canon



imageRUNNER ADVANCE

imagePASS-A1/B1

print controller
centralized print control
print job management

COLOR SOLUTIONS



advancing business

imagePASS-A1/B1

Introducing the Canon imagePASS-A1/B1 Print Controllers.
Truly advanced color graphics solutions.



imagePASS-A1/B1 for the imageRUNNER® ADVANCE Series

imagePASS-A1

- > Intel® Core™2 Duo T2500 2.0GHz
- > 512MB RAM Standard/
512MB RAM Option
- > 80GB Hard Drive
- > Hot Folders
- > Virtual Printers
- > Paper Catalog

imagePASS-B1

- > Intel Celeron® M440 1.88GHz
- > 512MB RAM Standard/
512MB RAM Option
- > 80GB Hard Drive
- > Hot Folders
- > Virtual Printers
- > Paper Catalog

Shared Features

Powerful Control

- > System 8e Release 2
- > Command WorkStation® 5*
- > Adobe® PostScript® Support
- > Fast RIP performance

Outstanding Color Quality

- > Optimized ICC profiles
- > Spot-On®
- > Precise color matching
- > Standard Auto Trapping

Impressive Job Management

- > Easy-to-use interface
- > Centralized control

* Command WorkStation 5 can be downloaded for free at www.efi.com/cws5.

Brilliant productivity

If your busy department or workgroup demands impeccable color accuracy, increased print processing power or genuine PostScript support, the Canon imagePASS-A1/B1 print controllers for imageRUNNER ADVANCE Series deliver all this and more. Designed to enhance the publishing of high-quality color documents in multiuser environments, the Canon imagePASS-A1/B1 controllers are destined to increase your productivity and lower costs.

Accelerated performance

The Canon imagePASS-A1/B1 controllers provide the robust processing capabilities that multiuser environments need and come bundled with some of the industry's most respected features to easily produce professional-looking documents quickly and easily. Workflows can be accelerated with tools and utilities that take away the guesswork for users, and centralized control for administrators provides enhanced management and security.





Spot-On with
Substitute Colors

A powerful multitasker

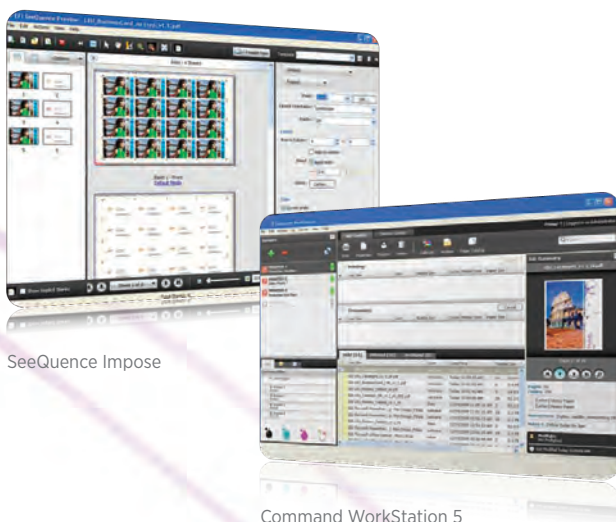
Built upon powerful system architectures offering plenty of memory, disk storage, PostScript support, and the latest system software, the Canon imagePASS-A1/B1 controllers provide robust processing capabilities for busy workplaces. They easily execute complex processing tasks with SmartRIP technology, even while concurrently printing other jobs.

Streamlined job management

At the touch of a finger, Command WorkStation 5 provides expert-level control over all your document workflows.

Standard features. You'll never miss a beat when it comes to scheduling jobs, adapting to changing print priorities throughout the day, or reproducing existing documents with JDF support. Now all these tasks can be done with ease.

Advanced solutions. More advanced layout capabilities can be added through the optional SeeSequence Impose feature, which enables users to edit documents using a familiar "WYSIWYG" interface, make changes on-the-fly, and save changes for future use.



SeeSequence Impose

Command WorkStation 5

Exceptional color control

Color consistency. The imagePASS-A1/B1 controllers utilize optimized ICC profiles in the ColorWise® architecture to achieve accurate and consistent color on supported Canon imageRUNNER ADVANCE models. The controllers are also fully compliant with the PDF-X/3 standard for exceptional reproduction.

Color matching. Through the Spot-On with Substitute Colors feature, users can quickly match and reuse spot colors in logos and other documents with ease for reliable reproductions.

Auto trapping. With this standard feature, color misregistration is virtually eliminated through an advanced trapping algorithm so efficient that there's little to no print performance impact.

Work easier

Users will appreciate this intuitive print driver interface that makes it easy to achieve the desired output in fewer clicks and keystrokes.

Multipage booklets. For enhanced productivity, the drivers also include a Booklet-Maker feature to facilitate the production of multipage booklets.

Faster production. The standard Hot Folders* and Virtual Printers* features of the imagePASS-A1 controller enable administrators to create network-accessible folders and printers that are preconfigured with specific output settings for quick production.

Secure control

For administrators, integration and security concerns are easily addressed with three different access levels, LDAP-based user authentication, port blocking, IP/MAC filters, and secured printing capabilities that prompt users for a password at the device prior to output.

* Optional on the imagePASS-B1 only.

Product Specifications

Hardware

imagePASS-A1 Controller

Type:	Embedded
Supported Devices:	imageRUNNER ADVANCE C9075 PRO/C9065 PRO/C7065/C7055
Processor:	Intel Core2 Duo T2500 2.0GHz
System:	System 8e Release 2
PDL Support:	Adobe PS 3/PCL 5c/6
Print Resolution:	1200 x 1200 dpi 2400-dpi equivalent x 600 dpi
Memory:	Standard: 512MB Option: 512MB (Maximum 1GB)
HDD:	80GB
Interfaces (to LAN):	10/100/1000Base-T (RJ-45)
Dimensions (H x W x D):	11-1/2" x 4-1/2" x 13"

imagePASS-B1 Controller

Type:	Embedded
Supported Devices:	imageRUNNER ADVANCE C5051/C5045/C5035/C5030
Processor:	Intel Celeron M440 1.88GHz
System:	System 8e Release 2
PDL Support:	Adobe PS 3
Memory:	Standard: 512MB Option: 512MB
HDD:	80GB
Interfaces (to LAN):	10/100/1000Base-T (RJ-45)
Dimensions (H x W x D):	11-1/2" x 4-1/2" x 13"

Print Driver Supported OS

Adobe PS 3:	Windows* (Windows 2000/XP/Server 2003/Server 2008/Windows Vista*/Windows 7) Macintosh* (OS X 10.3.9 or later)
PCL 5c/6:	Windows (Windows 2000/XP/Server 2003/Windows Vista)

Color Management Features

- ColorWise Tools
- Spot-On with Substitute Colors
- Auto Trapping
- Rich Black feature

Workflow and Print Management Features

- Command WorkStation 5*
- JDF Support
- Mixed Media and Booklet-Maker V3
- Paper Catalog
- Compatibility with PDF 1.4, 1.5, 1.6, 1.7, and PDF/X
- Hot Folders and Virtual Printer**

Command WorkStation 5 Supported Files

- Adobe Acrobat*
- PostScript
- Microsoft* Office Documents

Networking/Connectivity

- Simultaneous Auto-switching Protocols
- EtherTalk II
- TCP/IP
- Novell* IPX Print
 - Exchange, Novell, Domino LDAPv3/RFC2251
 - E-mail address access and authentication
 - User password validation
- Certificate Management
 - SSL/TLS
 - X509 Standard
- IPv6 Support
- IP Sec Support

Auto-sensing Ports

- RJ-45 for on-board 10/100/1000Base-T
- 10/100Base-T, Automatic IP configuration

SNMP Printing Support

Mac Bonjour, AppleTalk*, SMB (peer to peer)

Variable Data Printing

FreeForm

Security

- Password Access in CWS
- Secure Erase (Option)
- IP Filtering
- MAC Filtering
- Port Blocking
- SNMPv3 System Updates
- 802.1x Support
- User Authentication
- IP Sec Support
- SSL/TLS Support

Utilities

- imagePASS-A1/B1 Driver
- Command WorkStation 5*
- WebTools
- Hot Folders and Virtual Printers**
- Remote Scan 5-3

Power Supply and Consumption

Auto-switching power supply with active PFC (Power Factor Connection)

Safety/EMC

- CE Mark, CSA, TUV/GS, UL, CB Scheme, RoHS
- EMC
 - EN55022 Part B (CE marked)
 - FCC Class B
 - VCCI II

Options

- SeeQuence (Impose)
- Hot Folders** and Virtual Printers**
- Secure Erase V1.1
- 512MB Option Memory
- X-Rite Eye-One

* Available with optional free download on www.efi.com/CWSS5.

** Option for imagePASS-B1 only.

Canon
image*ANYWARE*

1-800-OK-CANON
www.usa.canon.com

Canon U.S.A., Inc.
One Canon Plaza
Lake Success, NY 11042

CANON, IMAGEPASS, and IMAGERUNNER are registered trademarks of Canon Inc. in the United States and may also be registered trademarks or trademarks in other countries. IMAGEANYWARE is a trademark of Canon. All other referenced product names and marks are trademarks of their respective owners and are hereby acknowledged. Specifications and availability are subject to change without notice. Some items may not be available at this time; please check for availability.

© 2009 Canon U.S.A., Inc. All rights reserved.

1109-IP-A1/B1-PDF-MC

