

CX1145 MFP

Ordering Information		
Description	Part Numbers	
CX1145 MFP Includes Printer with 2 Paper Trays/ Scanner (RADF)/ 2-Drawer Paper Pedestal/Bypass Tray/Auto Duplex Unit	62432701	
Options		
Multi-Position Finisher ¹	70059901	
Saddle-Stitch Finisher ¹	70059902	
Hole Punch (Multi-Position Finisher)	70060001	
Hole Punch (Saddle-Stitch Finisher)	70060002	
2,500-Sheet High Capacity Feeder	70059801	
550-Sheet Paper Tray	70059601	
Bridge Kit ²	70060101	
Fax Board	70060401	
2nd Line Fax Board	70060402	
128 MB Memory Upgrade	70060501	
512 MB Memory Upgrade	70060502	
Wireless LAN Module Kit	70060601	
Bluetooth [®] Module Kit	70060602	
Wireless Antenna ³	70060701	
Security Kit ⁴ :		
Scrambler Board	70061001	
Data Overwrite Kit	70060801	
Parallel Interface Kit ⁴	70057801	
PCI Slot	70060901	
Supplies		
Toner Cartridges:		
Cyan Toner Cartridge	10,000 pg. ⁵	52121503
Magenta Toner Cartridge	10,000 pg. ⁵	52121502
Yellow Toner Cartridge	10,000 pg. ⁵	52121501
Black Toner Cartridge	27,000 pg. ⁵	52121504
Developer:		
Cyan Developer	37,500 pg. ⁵	57104803
Magenta Developer	37,500 pg. ⁵	57104802
Yellow Developer	37,500 pg. ⁵	57104801
Black Developer	150,000 pg. ⁵	57104804
Image Drum	200,000 pg.	56123501
Waste Toner Bag (4 per box)	50,000 pg.	57104901
Staples:		
Saddle-Stitch Finisher:		
Saddle-Stitch Staples	6,000 staples	57105001
Saddle-Stitch Staple Kit	15,000 staples	57105002
Multi-Position Finisher:		
Multi-Position Staple Kit	15,000 staples	57105003
Print Media		
Bright White Proofing Sheets (32 lb.):		
8.5" x 11"	500	52206101
Premium Card Stock (8.5" x 11"):		
60 lb. Cover	250	52205601
90 lb. Index	250	52205602
110 lb. Index	250	52205603
SynFlex™ Paper (Waterproof and Tear-resistant):		
8.5" x 11"	100	52205901

¹ Requires optional Bridge Kit.
² Required for either optional finisher.
³ For wireless LAN and Bluetooth options.
⁴ Requires PCI slot option.
⁵ Based on 6% coverage of letter-size sheets.

Specifications are subject to change without notice.

© 2009 Oki Data Americas, Inc. OKI Reg. T.M., M.D. M.R., Reg. T.M., Oki Electric Industry Co., Ltd. SynFlex T.M., Oki Data Americas, Inc. PCL Reg. T.M., Hewlett Packard Co. Microsoft, Office, Windows, Vista Reg. T.M., Microsoft Corp. PostScript Reg. T.M., PostScript 3 T.M., Adobe Systems, Inc. Mac Reg. T.M., Apple Inc. USB-IF logo T.M., Universal Serial Bus Implementers Forum, Inc. PostNet Reg. T.M., USPS. ENERGY STAR Reg. T.M., U.S. EPA.

Specifications

Printer

- **Print Speed:** Up to 11 ppm in color, 45 ppm in black & white¹
- **Time to First Page:** 16.2 seconds in color, 6.8 seconds in black & white²
- **Print Resolution:** Black & white 2400 x 600 dpi (Enhanced); up to 1200 x 600 dpi color (Fine mode); 600 x 600 dpi Normal mode)
- **Processor:** 600 MHz
- **File Storage:** 80 GB Hard Disk Drive standard
- **Duty Cycle:** 150,000 prints per month
- **Connectivity:** USB v2.0 Full Speed; 10/100 Base-TX Ethernet (network); Optional IEEE 802.11 b/g Wireless LAN; Optional Bluetooth[®] (HCRP/BIP); Optional Parallel interface²
- **Emulations:** PCL[®] 5c, PCL 6, PostScript[®] 3™
- **Operating Systems:** Novell[®] Netware[®] 4.2, 5.1, 6, 6.5; Windows[®] Vista[®] (32-/64-bit), Me/2000/XP, Windows NT[®] 4.0, Windows Server 2003 (32-bit); Citrix[®] MetaFrame; Macintosh[®] OS 10.1 or higher; Linux; UNIX[®]
- **Print Functions:** Duplex (2-sided) printing; Magazine sort; Mixed -size printing; Private print; Proof print; Scheduled print; Sheet insertion; Watermark

Copier

- **Copy Speed:** Up to 11 cpm in color, 45 cpm in black & white¹
- **Time to First Copy:** 16.2 seconds in color, 6.8 seconds in black & white²
- **Copy Resolution:** Up to 600 x 600 dpi
- **Copy Scaling:** Flatbed 25% to 400%; RADF 25% to 200%
- **Color Modes:** Auto Color, Full Color, Black Mode, Twin Color
- **Copy Quantity Selection:** 1-999
- **Copy Functions:** Annotation (date/time print); Auto trayless duplex; Color image adjustments; Cover sheet; Page numbering; Dual page copying; 2-, 4- and 8-in-1 duplex; Edge erase; Rotation copy; Mirror image; Job reservation (Scan Ahead); Job templates; Interrupt; Electronic sort; Negative/Positive; Image shift; Magazine sort (Booklet-Making mode); Sheet insertion

Scanner

- **Scan Type:** Color and black & white; flatbed with reversing automatic document feeder (RADF)
- **Max Scan Area:** 11" x 17"
- **Max Sheets (RADF):** 100
- **Scan Speed:** As fast as 50 spm (max) black & white; 40 spm (max) color
- **Scan Resolution:** Up to 600 x 600 dpi³

OKI DATA AMERICAS, INC.

USA
 2000 BISHOPS GATE BLVD.
 MOUNT LAUREL, NJ 08054-4620
 TEL: 800.OKI.DATA (800.654.3282)
 FAX: 856.222.5320

CANADA
 4140B SLADEVIEW CRESCENT
 UNITS 7 & 8
 MISSISSAUGA, ONTARIO L5L 6A1
 TEL: 905.608.5000
 FAX: 905.608.5040

LATIN AMERICA
 2000 BISHOPS GATE BLVD.
 MOUNT LAUREL, NJ 08054-4620
 TEL: 856.231.0002
 FAX: 856.222.5071

OKI DATA DE MÉXICO, S.A. DE C.V.
 MARIANO ESCOBEDO, 748 8º PISO
 COL. NUEVA ANZURES C.P. 11590
 MÉXICO, D.F.
 TEL: 55.5263.8780
 FAX: 55.5250.3501

OKI DATA DO BRASIL INFORMÁTICA LTDA.
 AV. ALFREDO EGÍDIO DE SOUZA ARANHA, 100
 BLOCO C - 4º ANDAR
 04726-170 - SÃO PAULO - SP - BRASIL
 TEL: 11.3444.3500
 FAX: 11.3444.3502

WWW.OKIPRINTINGSOLUTIONS.COM

Printed in the USA
 MS15961-0509

CX1145 MFP

OKI
 PRINTING SOLUTIONS



High-performance, cost-effective tabloid MFP – with the added convenience of color output

- **Output Capacity:** 550 sheets
- **Paper Types:** Tabloid, Legal, Letter, Executive, Statement, A3, A4, A5, B4 and B5 sheets
- **Paper Weight:** 2 x 550-Sheet cassettes 17 lb. – 28 lb. bond (64–105 gsm); 550-sheet Paper Feed Pedestal cassette 17 lb. – 28 lb. bond (64–105 gsm); 100-sheet Bypass Tray 17 lb. bond – 110 lb. index (75–203 gsm); Optional 2,500-sheet High-Capacity Feeder 17 lb. – 28 lb. bond (64–105 gsm); 550-sheet drawer 17 lb. – 28 lb. bond (64–105 gsm); Scanner RADF 9.3 lb. – 41.8 lb. simplex, 13.3 lb. – 41.8 lb. duplex

Options

- **Additional Paper Input:** 550-sheet Paper Tray; 2500-sheet High-Capacity Feeder
- **Saddle Stitch Finisher⁵:** 2 Finishing trays (stack capacity @ 1,000 letter-size sheets each); Staple capacity 50 sheets (Letter/Letter-R, 20 lb. bond); Feature set – Non-sort/Sort/Staples sort/Group; Multi-position (5) stapling; Optional Saddle-Stitch Hole Punch
- **Multi-Position Stapling Finisher⁵:** 1 Finishing tray + 1 Stationary tray (Finishing tray capacity 2,000 letter-size sheets; Stationary tray capacity 250 letter-size sheets); Staple capacity 50 sheets (Letter/Letter-R, 20 lb. bond); Feature set – Non-sort/Sort/Staple sort/Group/Manual staple; Multi-position (3) stapling; Optional Hole Punch
- **Hole Punch Units:** 2- to 3-hole punch capability
- **Wireless Options:** IEEE 802.11 b/g Wireless LAN Module Kit; Bluetooth[®] (HCRP/BIP)
- **Security Kit⁶:** Secures stored documents via encryption of data on hard drive

Environmental

- **Size (WxDxH):** 26" x 29" x 30" (66.0 cm x 73.6 cm x 76.2 cm)
- **Weight:** Approx. 247 lb. (112.0 kg)
- **Power Consumption:** 1.5 KW max.
- **Acoustic Noise:** Operating (Printing/Scanning/Copying) 60 dB; Idle 40 dB
- **ENERGY STAR[®] Compliant:** Yes

¹ Published performance results based on letter-size sheets in laboratory testing. Individual results may vary.

² Requires optional PCI slot.

³ Higher resolution may require additional memory.

⁴ Based on ITU-T Test Chart #1.

⁵ Requires optional Bridge Kit.

⁶ Requires optional Scrambler Board, Data Overwrite Kit and PCI slot.



OKI
 PRINTING SOLUTIONS

CX1145 MFP from OKI Printing Solutions. The reliable black & white MFP with the low cost per page you need – and the color printing and copying you want.

CX1145 MFP Highlights:

- Print, copy and scan with optional fax in one feature-rich device
- Print/Copy speeds of up to 45 ppm in black & white, 11 ppm color¹
- Low black & white cost per page for increased efficiencies
- Crisp, clear black & white output with the convenience of striking business color
- Multi-tasking standard
- 100-sheet RADF scanner automatically scans both sides of a document²
- LCD touch-screen with QWERTY Keypad for easy walk-up access to full functionality
- Copy and scan sheets up to 11" x 17" and get output up to 12" x 18"
- Supports media up to 203 gsm (110 lb. index)
- Duplex (2-sided) printing/copying standard
- 1,750-sheet standard paper capacity; expands to 3,700 sheets max with options
- PostScript® 3™, PCL® 5 and PCL 6 emulations
- Scan to file, e-mail and FTP sites
- 80 GB hard disk drive standard
- USB 2.0 and Ethernet connectivity standard, with optional parallel interface, wireless LAN and Bluetooth® available
- Optional Super G3 fax with single or dual lines, additional paper capacity and memory, enhanced security kit, and choice of finishers³



Economy plus color – If you're looking for the cost-savings of black & white but want the capability to print and copy in color when needed, look no further than the CX1145 MFP from OKI Printing Solutions.

This multifunction device gives you the low economy of black & white printing and copying along with productivity- and budget-enhancing features such as scanning, faxing and finishing. Because its color and black & white development systems act independently, the CX1145 MFP provides a cost per page for black & white output that's consistent with that of most monochrome-only multifunction devices.

The color-enhanced CX1145 MFP delivers superb performance with a fast 600 MHz processor, 80 GB hard disk drive, and enhanced duplex (2-sided) printing and copying. It produces crisp, clear black & white output at a rate of 45 pages per minute—and attention-grabbing color pages at 11 pages per minute.¹

With the CX1145 MFP, you're able to control the use of color and save time, money, and effort while increasing the impact and effectiveness of your documents and presentations.

Consolidate functionality and upgrade as you grow. Protect your budget from unauthorized color printing and copying. And safeguard your documents with enhanced security features.

Reliable performance in every mode – Use your CX1145 MFP as a network printer, copier, scanner and fax machine, while avoiding the cost and maintenance associated with dedicated equipment. Highlight important information with color while enjoying the speed, clarity, and economy of black & white for everyday jobs.

The CX1145 MFP utilizes net-ready single board architecture, an approach that allows you to add functionality as you need it—just plug and print. With its electronic filing capability, you can distribute data to multiple destinations with a few easy steps. Other productivity-enhancing features include Scan-to-email, Internet faxing, and dual access.

Versatile, powerful output – CX1145 MFPs give you the power to create for any purpose. Use cover-weight, glossy, and tabloid-size sheets—whatever suits your presentation needs. Finish

a job professionally with automatic stapling, hole punch and saddle-stitch finishing. Plus, record what works—the 80 GB hard disk drive can store specific copy, fax, scan, and finishing settings as easy-to-access templates—up to 12,060 of them.

User management and privacy – For more robust device management, the CX1145 MFP allows managers to control printing and copying by setting quotas for color and black & white output. There are two levels of usage control or restrictions—user and department—with three user authentication options: Local, Windows Domain, and LDAP. In addition, managers can track and restrict the use of color or black & white functionality according to department code, or even an individual's password. Printing sensitive documents is also secure—even in a busy office: document files sent from a PC are held by the device until accessed via password.

Heightened security – Today's businesses are becoming more and more concerned with document security. That's why we've included features to make the CX1145 MFP even more secure. The data overwrite feature writes over the data after each job is processed to protect confidential information. An optional scrambler board encrypts hard drive data to secure stored documents. And complete LDAP authentication provides an additional layer of security by controlling access to the device.

For everyday office printing with the flexibility of color, the CX1145 MFP from OKI Printing Solutions is perfect for every business looking to economically improve their communications.

The CX1145 MFP Feature Sets

PRINTING

- Cover Sheet
- Document Monitor Utility
- Duplex Printing
- Hole Punch
- Magazine Sort
- Mixed Size Printing
- Private Print
- Proof Print
- Saddle-Stitch/Booklet Mode
- Scheduled Print
- Sheet Insertion
- Stapled Sets
- Watermark

SCANNING

- Color and Black & White Scanning
- Scan-to-File
- Scan-to-email
- Scan-to-FTP
- TWAIN Compatible

FAXING (OPTIONAL)

- Address Book (1,000 Addresses)
- Automatic Redial
- Broadcasting (Max. 1,000 Destinations)
- Chain Dialing
- Delayed Transmission
- Direct Transmission
- Double Sided Scanning and Reception
- Dual Access
- Group Dialing (Max. 200 Groups, 400 Destinations/Group)
- Optional Second Line
- Network Faxing
- Polling
- Priority Transmission
- Public Mailbox (F-Code)
- Route Fax to Folder/E-mail
- TX/RX Reporting

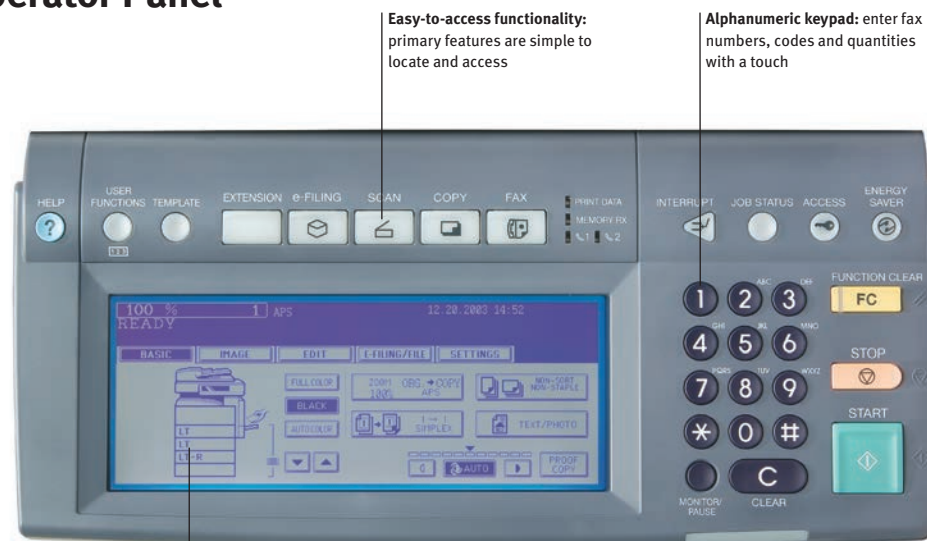
COPYING

- Access Codes (1,000 Department/10,000 User)
- Annotation (Date/Time Print)
- AMS/APS (RADF and Platen)
- Auto Job Start
- Auto Cassette Change
- Auto Trayless Duplex
- Auto Energy Saver
- Auto Sleep Mode
- Color Image Adjustments
- Cover Sheet
- Dual Page Copying
- Edge Erase
- Document Storage
- Electronic Sort
- Energy Saver
- Image Shift
- Interrupt
- Job Templates
- Job Reservation (Scan Ahead)
- Magazine Sort (Booklet-making Mode)
- Mirror Image
- Negative/Positive
- Page Numbering
- Rotation Copy
- Sheet Insertion
- Weekly Timer
- X-Y Zoom
- 2-in-1, 4-in-1, 8-in-1 Duplex

DEVICE MANAGEMENT

- Remote Device Management Utility
- E-mail Notification for Service Calls
- E-mail or Fax Notification for Counters and Preventative Maintenance
- Automatic Supply Ordering
- Department Code Enforcement
- Access Limitations for Color and Black & White

The CX1145 MFP Operator Panel



Easy-to-access functionality: primary features are simple to locate and access

Alphanumeric keypad: enter fax numbers, codes and quantities with a touch

Backlit LCD display: simplifies navigation; enhances user productivity; QWERTY keypad enables entry of e-mail addresses and FTP sites



¹ Published performance results based on A4-size sheets in laboratory testing. Individual results may vary.

² Letter/A4 sheets; 50 tabloid-size sheets.

³ Finishers require optional Bridge Kit.

⁴ Based on 6% coverage on letter-size sheets.