



CORPORATE SOLUTIONS

**ColorPASS-GX200
imagePASS-H1 v2.0**



CORPORATE SOLUTIONS



INTRODUCING THE NEW CANON ColorPASS-GX200 AND imagePASS-H1 v2.0 PRINT CONTROLLERS

Two robust print server options that deliver incomparable productivity and exceptional document output capabilities on Color imageRUNNER® devices

Realizing the full potential of your digital color documents becomes reality with the new Canon ColorPASS-GX200 external and imagePASS-H1 embedded print controller options for Color imageRUNNER devices. Like never before, you can achieve unimagined color output with a host of productivity-boosting features, true Adobe® PostScript® support, and extraordinary control over all your printed documents.

Designed to manage the creation to finishing process for color-centric business and mid-level production environments, the ColorPASS-GX200 and imagePASS-H1 print controllers complete the document production workflow with outstanding capabilities and speed. The ColorPASS-GX200 controller enables graphic-intensive users and light- to mid-production environments to produce high-volume, color-intensive documents with a complete set of job management features, tools, and utilities. The imagePASS-H1 controller is a high-performance embedded controller ideal for mid-level production environments that require precise color accuracy.

The ColorPASS-GX200 and imagePASS-H1 print controllers each include an extensive list of features for total control over job management, achieving accurate color output, and merging variable data sources. Regardless of which controller option you select, deployment and administration have been streamlined to maintain high productivity, minimize downtime, and secure your information.

BOOST PRODUCTIVITY AND STREAMLINE WORKFLOW

imagePASS-H1



- **Hardware Designed for High Productivity**
Dedicated hardware and software to maximize processing speed
- **True Adobe PostScript Technology**
Ensuring color accuracy and print integrity of PS documents
- **Document Submission and Management**
Intuitive user interface and centralized workflow control
- **Brilliant Color Quality**
Advanced color management and consistent output
- **Powerful Document Assembly Tools**
Create complex documents with unique output settings
- **Advanced Workflow Software Options**
Rich variable data support and job creation tools
- **Uncomplicated Deployment and Administration**
Complete set of tools for integration, management, and security



ColorPASS-GX200

HARDWARE DESIGNED FOR HIGH PRODUCTIVITY

ColorPASS-GX200

The ColorPASS-GX200 print controller option for Canon Color imageRUNNER devices is a stand-alone server powered by a cutting-edge system architecture, at the heart of which is a 2.13GHz Intel® Core™2 Duo multiprocessor CPU and 1GB of RAM. Not only is the ColorPASS-GX200 controller built for production-level speed, but it also features the ultimate in industrial design to visually convey its multitasking prowess.

ColorPASS-GX200 Server



imagePASS-H1

The imagePASS-H1 print controller is an embedded server for Color imageRUNNER devices that's powered by a 1.5GHz Intel Celeron® M processor and 256MB of RAM. Nearly six times faster than other leading embedded controllers, the imagePASS-H1 is well adapted to the requirements of demanding workgroups that require high productivity and accurate color output.

Software Architecture for Peak Performance

The ColorPASS-GX200 and imagePASS-H1 controllers include SmartRIP technology, which uses highly intelligent processing routines that significantly increase RIP performance. SmartRIP also produces visibly smoother lines and crisper text at high resolutions. Multitasking is also no match for the Canon ColorPASS-GX200 and imagePASS-H1 controllers since they're able to concurrently RIP one print job while printing another for optimal productivity.

True Adobe PostScript Support

When it comes to rock-solid PS output, these controllers deliver true Adobe PostScript support. For the highest level of color precision and content interpretation from Adobe-based applications, the Canon ColorPASS-GX200 and imagePASS-H1 controllers inspire confidence with their accurate output.

The Canon ColorPASS-GX200 and imagePASS-H1 controllers are natively compatible with PDF file formats up to 1.7 (Acrobat 8.0) and Encapsulated PostScript (EPS) format. Support for XObjects is also included on a per-job basis, which can shorten the processing time required to RIP a document and reduce the file size stored on the controller when repeating elements are used.



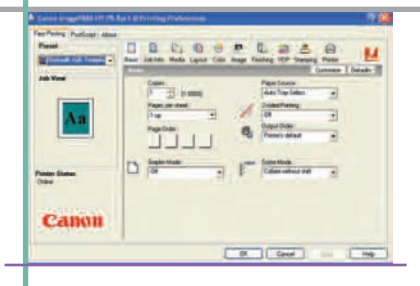
imagePASS-H1 Controller

DOCUMENT SUBMISSION AND MANAGEMENT

Intuitive Print Drivers

The print drivers for the ColorPASS-GX200 and imagePASS-H1 controllers are highly intuitive, resulting in significantly reduced learning curves for users. Featuring a familiar icon-driver interface and bi-directional support, users can see the status of, and control, each of the advanced functions available on the Canon Color imageRUNNER device quickly and easily. For enhanced productivity, the drivers also include the new Booklet Maker v3.0 feature to easily facilitate the production of multipage booklets. The drivers support both Windows® and Macintosh® environments.

Print Driver



Command WorkStation®

Environments with advanced document workflow requirements, or those managing multiple ColorPASS-GX200 and/or Canon imagePASS-H1 controllers will appreciate the robust capabilities of the standard Command WorkStation application. From Command WorkStation, users can change the properties of print jobs, preview documents, and even merge multiple documents into one. For greater expert-level control of print queues, the Canon ColorPASS-GX200 controller provides additional features through Command WorkStation such as:

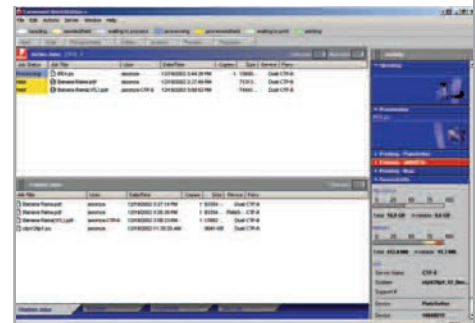
- Process Next
- Advanced Job Reorder
- Quick Doc Merge
- Schedule Print
- Suspend on Mismatch

Hot Folders and Virtual Printers

Enhance your document production capabilities and streamline printing for users with Hot Folders and Virtual Printers* for the Canon ColorPASS-GX200 and imagePASS-H1 controllers. Hot Folders save time for users by providing the ability to drag-and-drop documents into designated folders that are preconfigured for complex print jobs. Native support for Adobe Acrobat and PostScript files, as well as Microsoft Office documents, are standard. Virtual Printers is a utility that enables administrators to create network-accessible printers that are configured to output specific print jobs.

Job Definition Format (JDF) Support

These controllers support the submission of documents in JDF format, which greatly streamlines print workflows. Documents in JDF format contain a job ticket that specifies the output and finishing settings. For example, a job ticket can store information such as whether the output should be single- or double-sided, which paper types and sizes are used, and page layout and collation settings. As a result, the JDF format minimizes errors in workflows and accelerates the print production process by storing the settings for each job to increase overall productivity.



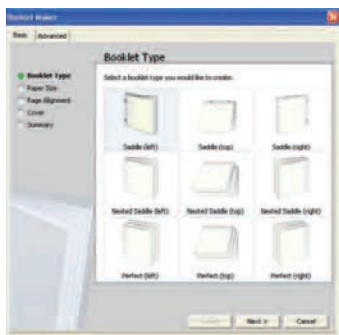
Command WorkStation

* The Hot Folders and Virtual Printers features are standard on the ColorPASS-GX200 and optional for the imagePASS-H1 v2.0.

ADVANCED DOCUMENT WORKFLOW

Document Assembly

Creating complex documents on the ColorPASS-GX200 and imagePASS-H1 controllers is facilitated through a number of available features. For quick and easy booklet creation right from the print driver, the Booklet Maker v3.0 software feature allows users to print multiple pages from any application in booklet style, without the need for advanced imposition programs. To produce documents with unique finishing and paper settings per page or a range of pages, the Mixed Media tab in the print driver provides a powerful means to customize output for different paper sources, weights and stocks. And to make sure that the proper paper selection is made at the time of printing, the standard Media Manager in the print driver provides real-time information on the Color imageRUNNER device's installed paper types and tray assignments.



Booklet Maker

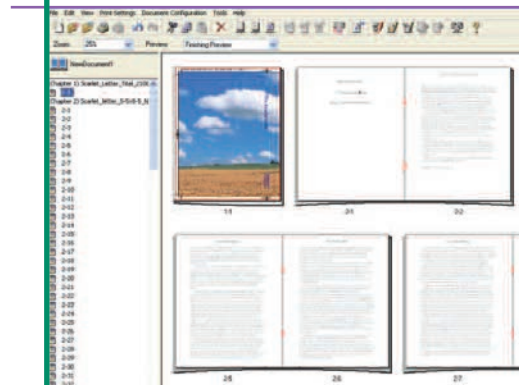
imageWARE Prepress Manager

The Canon imageWARE Prepress Manager software option is a comprehensive make-ready and production workflow tool designed to simplify the document publishing process. The software supports page-level programming for media selection and finishing as well as detailed document imposition, and registration marks. Complex documents can be created from source files made in many different applications and easily combined with scanned originals. Once in Canon imageWARE Prepress Manager, pages can be manipulated through the robust image and content editing tools.

Create Highly Customized Documents

The ColorPASS-GX200 and imagePASS-H1 controllers include a number of industry-leading tools to produce highly customized documents with variable data printing. With support for many standard VDP file formats, documents can be created in a variety of applications for output on a Color imageRUNNER device. The ColorPASS-GX200 and imagePASS-H1 controllers also include Freeform™ and Freeform 2 embedded applications that provide basic variable data printing capabilities for personalization and flexibility. For more advanced needs, the Canon ColorPASS-GX200 controller includes support for many leading VDP authoring programs that utilize the latest PPML 2.2 and VPS formats. The ColorPASS-GX200 has been optimized to accelerate the merging of variables and global objects, and can quickly process multiple images for increased productivity.

imageWARE Prepress Manager



SPECIFICATIONS

ColorPASS-GX200

Hardware

CPU:	Intel Core 2 Duo E6400, 2.13GHz
System:	System 8 Release 2
Memory:	1GB (Standard)
HDD:	160GB
DVD/CD-RW:	Standard
Interfaces (to LAN):	10/100/1000Base-T (RJ-45)
Server Size (H x W x D):	19-1/5" x 8-2/5" x 19"

imageRUNNER Engine Supported

Color imageRUNNER C5185/C4580/C4080

Operating System/Supported PDL

Windows XPe/Adobe PostScript 3

Color Management Features

- ColorWise tools
 - Spot-On with Substitute Colors
 - Graphic Arts Feature Set (Option)
 - Graphic Arts Feature Set Premium (Option)
- Rich Black feature

Workflow and Print Management Features

- Command WorkStation
- Hot Folders and Virtual Printer
- JDF support
- Mixed Media and Booklet Maker V3
- Suspend on Mismatch
- Process Next
- Quick Doc Merge
- Schedule Printing
- Advanced Job Re-Order
- Paper Catalog
- Compatibility with PDF 1.4, 1.5, 1.6, 1.7 and PDF/X

Networking/Connectivity

- Simultaneous Auto-switching Protocols
- EtherTalk II
- TCP/IP
- Novell® iPrint
- LDAP Support
 - Exchange, Novell, Domino LDAPv3/RFC2251
 - E-mail address access and authentication
 - User password validation
- Certificate Management
 - SSL/TLS
 - X509 Standard
- IPv6 Support
- IP Sec Support

Auto-sensing Ports

RJ45 for on-board 10/100/1000Base-T and 10/100Base-T, Automatic IP configuration

SNMP Printing Support

Mac Bonjour, AppleTalk®, SMB (peer to peer), LPD

Security

- Password access in CWS
- Secure Erase
- IP Filtering
- MAC Filtering
- Port Blocking
- SNTP
- SNMPv3 System Updates
- 802.1x Support
- User Authentication
- IP Sec Support
- SSL/TLS Support
- Removable Hard Disk Drive (Option)

Variable Data Printing

FreeForm, PPML

Utilities

- ColorPASS-GX200 Driver
- Command WorkStation, Windows Edition
- Command WorkStation, Macintosh Edition
- WebTools
- Hot Folders and Virtual Printers

Power Supply and Consumption

- Auto-switching 90-135/180-265 Vac, 47-63Hz
- 6A @ 115 Vac; 3A @ 230 Vac

Safety/EMC

- CE Mark, CSA, TUV/GS, UL, CB Scheme, RoHS
- EMC
 - EN55022 Part B (CE marked)
 - FCC Class B
 - VCCI II

Options

- Graphic Arts Feature Set V2.1
- Graphic Arts Feature Set Premium V2.1
- Impose V2.7
- Compose V2.0
- Removable Hard Disk Drive Kit-B1
- X-Rite Eye-One
- Advanced Controller Interface Kit
- Integrated Interface and Stand-A1

imagePASS-H1 v2.0

Hardware

CPU:	Intel Celeron M, 1.5GHz
System:	System 8e Release 2
Memory:	256MB (Standard), 512MB (Maximum)
HDD:	80GB
Interfaces (to LAN):	10/100/1000Base-T (RJ-45)
Dimensions (H x W x D):	11-1/2" x 4-1/2" x 13"

imageRUNNER Engine Supported

Color imageRUNNER C5185/C4580/C4080

Operating System/Supported PDL

Linux/Adobe PostScript 3, PCL5c/6

Color Management Features

- ColorWise tools
- Spot-On with Substitute Colors
- Rich Black feature

Workflow and Print Management Features

- Command WorkStation
- Folders and Virtual Printer
- JDF Support
- Mixed Media and Booklet Maker V3
- Paper Catalog (Option)
- Compatibility with PDF 1.4, 1.5, 1.6, 1.7 and PDF/X

Networking/Connectivity

- Simultaneous Auto-switching Protocols
- EtherTalk II
- TCP/IP
- Novell iPrint
- LDAP Support
 - Exchange, Novell, Domino LDAPv3/RFC2251
 - E-mail address access and authentication
 - User password validation
- Certificate Management
 - SSL/TLS
 - X509 Standard
 - IPv6 Support
 - IP Sec Support

Auto-sensing Ports

RJ45 for on-board 10/100/1000Base-T and 10/100Base-T, Automatic IP configuration

SNMP Printing Support

Mac Bonjour, AppleTalk, SMB (peer to peer)

Security

- Password Access in CWS
- Secure Erase (Option)
- IP Filtering
- MAC Filtering
- Port Blocking
- SNTP
- SNMPv3 System Updates
- 802.1x Support
- User Authentication
- IP Sec Support
- SSL/TLS Support

Variable Data Printing

FreeForm

Utilities

- imagePASS-H1 v2.0 Driver
- Command WorkStation, Windows Edition
- Command WorkStation, Macintosh Edition
- WebTools
- Hot Folders and Virtual Printers (Option)

Power Supply and Consumption

Auto-switching power supply with active PFC

Safety/EMC

- CE Mark, CSA, TUV/GS, UL, CB Scheme, RoHS
- EMC
 - EN55022 Part B (CE marked)
 - FCC Class B
 - VCCI II

Options

- Impose V2.7
- Hot Folder V2.0
- Secure Erase V1.0
- Paper Catalog Kit
- 256MB Option Memory Kit

Canon
image*ANYWARE*

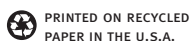
1-800-OK-CANON

www.usa.canon.com

Canon U.S.A., Inc.
One Canon Plaza
Lake Success, NY 11042

As an ENERGY STAR® Partner, Canon U.S.A., Inc. has determined that this product meets the ENERGY STAR guidelines for energy efficiency. ENERGY STAR and the ENERGY STAR mark are registered U.S. marks. Adobe and PostScript are registered trademarks or trademarks of Adobe Systems Incorporated in the United States and/or other countries. Intel and Celeron are trademarks or registered trademarks of Intel Corporation or its subsidiaries in the United States and/or other countries. Novell is a registered trademark of Novell, Inc. in the United States and other countries. Command WorkStation, FreeForm, ColorWise, and Spot-On are registered trademarks of Electronics for Imaging, Inc. in the U.S. Patent and Trademark Office and/or certain other foreign jurisdictions. PANTONE is a registered trademark of Pantone, Inc. Macintosh, AppleTalk, and EtherTalk are trademarks of Apple Inc. Microsoft and Windows are registered trademarks of Microsoft Corporation in the United States and/or other countries. CANON, COLORPASS, IMAGEPASS, and IMAGERUNNER are registered trademarks of Canon Inc. in the United States and may also be a registered trademarks or trademarks in other countries. IMAGEANYWARE is a trademark of Canon. All referenced product names and other marks are trademarks of their respective owners. Specifications and availability subject to change without notice. ©2008 Canon U.S.A., Inc. All rights reserved.

0120W651
0408-CPiP-25M-DCR



PRINTED ON RECYCLED
PAPER IN THE U.S.A.

