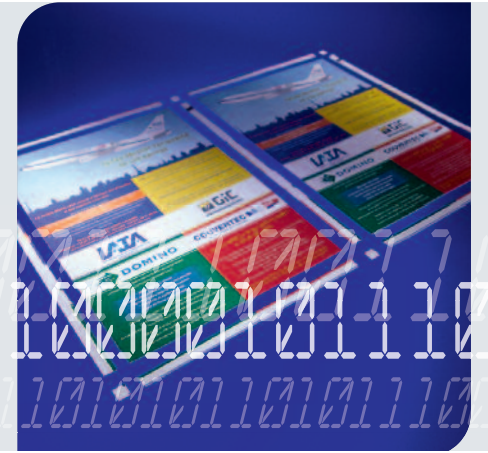


Discover Standard Hunkeler

High Performance Cutting Solution



Standard's new 8,000 square-foot National Customer Demonstration Center, which also includes eight specially-equipped rooms for advanced operator and technical training of customers, dealers and partners is located just minutes from Boston. Nearly every Standard Hunkeler and Standard Horizon solution we offer is on display and ready-to-run.



For over 100 years, Standard Finishing Systems has offered high-quality, highly-reliable graphic arts products, working exclusively with world-class suppliers. Standard finishing equipment is sold and serviced through a comprehensive network of authorized dealers throughout the US and Canada. These industry-leading dealers pride themselves on providing the highest levels of sales and service support. Standard Hunkeler pre/post and web finishing products are sold by a field sales team that has decades of printing and paper handling expertise. Standard serves the complete feeding and finishing needs of the commercial print, in-plant, trade bindery, data center, financial print, direct mail, forms, and quick print markets.



huncolor
ready

The ultimate cutting system

The modular Standard Hunkeler high speed roll to cut solution for sheeted output offline or inline with digital continuous feed printing systems. Optional slit-merge or plow folding with the variable chip-out rotary double cutter for full bleed products in the Direct Mail and POD markets.

UW6 Unwind Module

The new generation UW6 unwinder was specifically designed for a flexible, high-performance environment. Ease of use, enabled by the automatic dancer control system, and user guide with touch panel reduce setup times to a minimum. Rolls with diameters of up to 54" are loaded semi-automatically. A triple dancer guarantees optimum acceleration of the web, and provides for the processing of a wide range of paper weights. The dancer weight can be decoupled completely by the loop control to allow for tension free feed into high-performance digital printers and cutters.

CS6 Cross- and Length Cutter

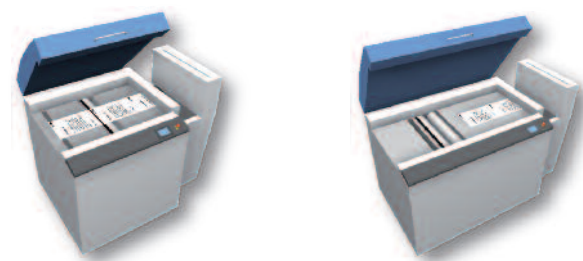
The CS6 rotary cross cutter consistently produces clean, accurate cuts at exact angles, ensuring the highest levels of productivity and quality of output. In combination with the register control software, it also provides the precision essential to the finishing process. Setups and adjustments are easily performed at the display panel. The new Line-PC permits unlimited storage of various job data, offering automatic set up and make ready of previously stored job processing data by the touch of a button. An integrated diverter separates waste from the production output. If equipped with the new, individually driven edge trimmers, and up to three linear cutters, 4-up forms can be produced reliably and efficiently.

CS6-I (Single Cut)

This version of the CS6 is equipped with a single rotary cutter for the production of traditional single cut forms in the print-on-demand and transactional printing segments.

CS6-II (Double Cut)

The flexible high performance solution for mailing applications. By means of two independent, dynamically controlled rotary cutters, full bleed products are produced swiftly and accurately.



CS6 Cutter Technical Data

Web width:	6.5" – 20.5"	(165 – 520 mm)
Cut length:	5.5" – 62"	(135 – 1575 mm)
Variable chip-out:	3/16" – 2 3/4"***	
Paper weight:	27# offset - 110# cover*	(40 – 300 gsm *)
Production speed:	up to 590 ft/min	(180 m/min)
Option:	merger + plow folder	

*Below 60 gsm and above 250 gsm require paper test.
**Depends on paper and speed

All technical data subject to change

Flexible solution for direct mailings

High Reliability

Rotary scissor cut technology guarantees highest reliability and precise, consistently accurate cuts, creating minimal dust. Integrated carbide knives allow for more than 30 million cuts between knives changes. The CS6 offers a service friendly layout, accompanied by state-of-the-art drive technology and ergonomic design.

Flexibility

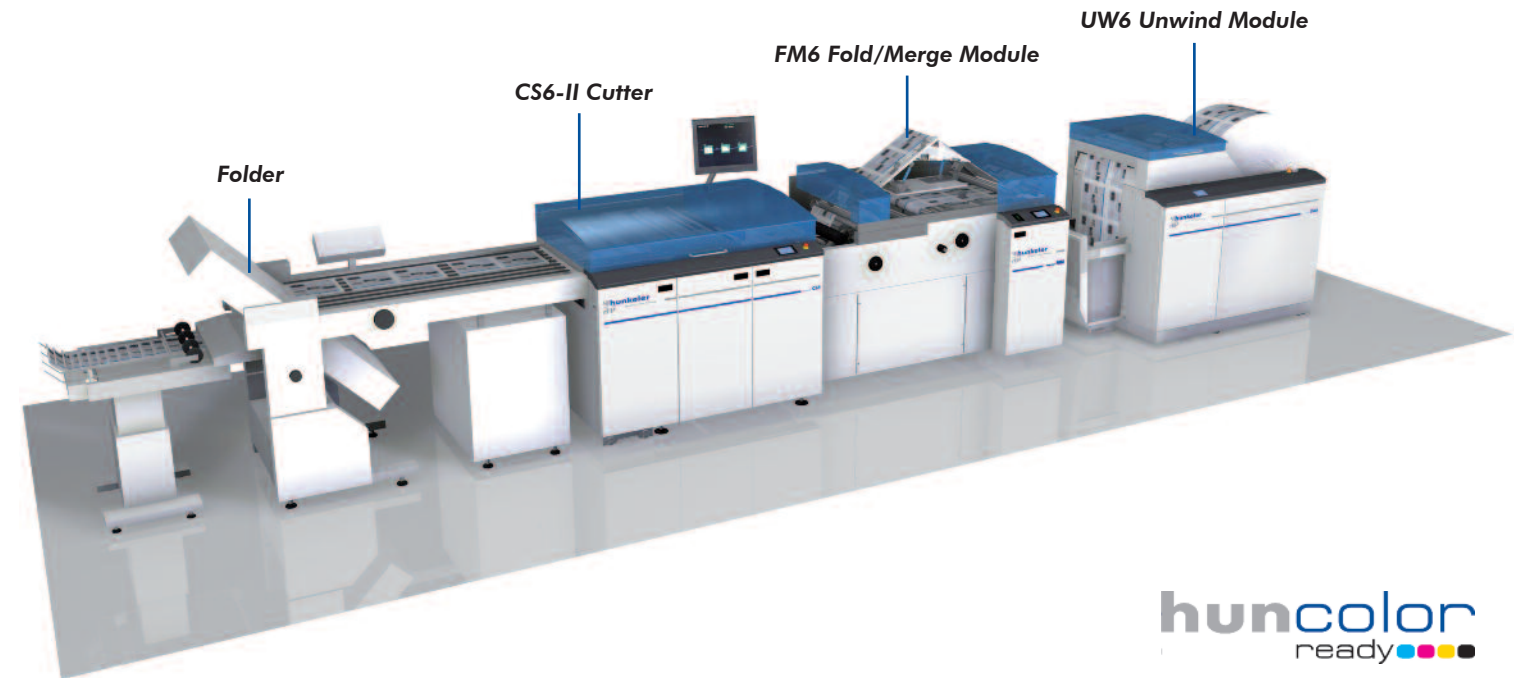
The CS6 proficiently cuts any sheeted products, from full-bleed forms to signatures, deriving its high level of flexibility from a wide variety of chip-out sizes and cut off lengths. Undemanding operation by touch screen and Line-PC, programmed in a number of different languages, as well memory functions for machine set-up increase ease of operation and productivity.

Investment Protection

By processing paper weights from 27# offset to 110# cover, and operating at speeds of up to 590 ft/min, the CS6 fulfills tomorrow's requirements of the market. The dynamic diversion of waste or blank sheets leads to an efficient downstream process that no longer requires manual intervention.

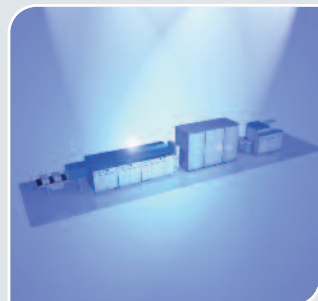
Modular Concept

This allows for flexible customization to your specific requirements. The line, for instance, can be expanded either with a WM6 web-merger module or the combination FM6 plow-folder/web-merger module to create a universal high speed mailing system.



Patent pending

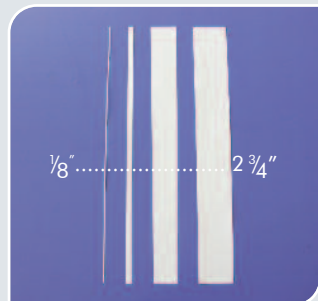
Features



Stand alone offline, or inline with digital printers



Light weight and heavy weight paper application



Electronic variable double cut/chip-out



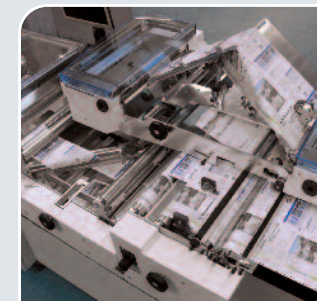
Production speed up to 590 ft/min (180 m/min)



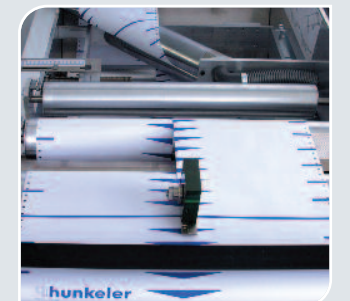
Driven edge trimmers, and up to three linear cutters



Integrated diverter for set up and error pages



FM6 combines plow-folding and slit-merge functions



WM6-even: cuts the web and merges these within register