

Presstek Momentum Pro

Fully Integrated RIP/Workflow Solution

MOMENTUM PRO



Momentum Pro

Easy-to-Use, Affordable PDF Workflow



Momentum Pro is a fully integrated RIP and workflow that is designed to streamline and automate the production process using Certified PDF tools. The workflow can be used as a centralized PDF creation and preflight system, ensuring consistent output to multiple devices. Momentum Pro increases productivity, manages your work, and reduces cost. With an intuitive user interface, operators are able to manage and control jobs from virtually any prepress workstation. Customized workflow sequences can be designated and stored, greatly reducing the opportunity for error.

Momentum Highlights

PDF Capabilities

Momentum Workflow's PDF capabilities provide greater control and management of incoming Postscript and PDF files. The PDF creator and Preflight modules are essential tools for creating and optimizing a Master PDF file. PDF creator automatically creates PDFs from incoming Postscript files, then preflights the PDFs using the integrated Preflight module that fixes many common job problems. Preflight reports can automatically be generated to alert the

operator to problems such as low resolution images, 4-color black text, and RGB images. Adding Acrobat Professional and Enfocus PitStop provides PDF editing capabilities to your system. The ability to edit PDF files provides even more control and flexibility over incoming PDF files.

Remote Control From Your Desktop

Momentum Workflow uses client server technology. With an easy-to-use graphical user interface the Momentum Workflow enables operators to manage and control jobs from a Mac or PC workstation. Job tracking can be monitored on any workstation throughout the production process. Administrator and user permissions can be set up for each client providing various levels of access. The system includes two client licenses. Additional licenses can be purchased up to a maximum of ten.

Extensive Job Management

Job tracking and process control has never been easier. The workflow enables users to sort jobs by name, status, priority, workflow and job number. There are also additional headings that can be customized to fit your requirements. This enables operators to quickly navigate through a long list of jobs based on the selected criteria. The management system also keeps copies of the job at all stages of the workflow. This allows jobs to be easily resubmitted without having to go back to the original design application to be reprinted.

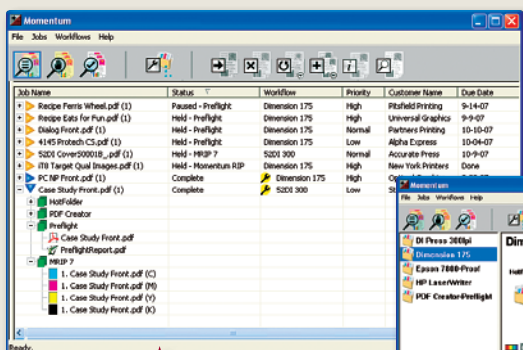
Controlling RIP Page Setups

Commonly used settings in Page Setups can be edited within the workflow. Rotation, trapping, imposition templates and separation styles can all be edited. This reduces the number of individual Page Setups required. Access to these Page Setups also allows the user to make last minute changes to the job on the fly. These changes do not affect the original Page Setups—only the setup for that particular job.

Native PDF, PS, and XPS Processing

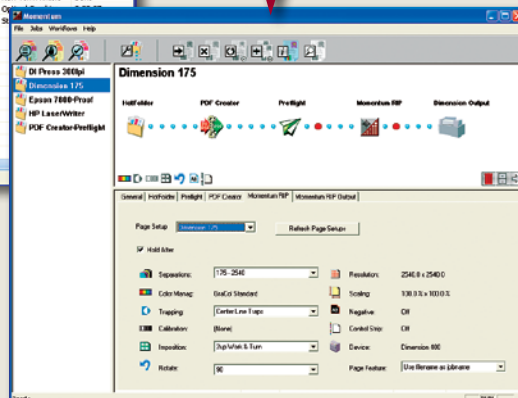
Momentum not only can process PostScript and PDF files natively but also the newest print format XPS, the XML Paper Specification. Processing file formats natively means there is no intermediary conversion to another file format, so that files are rendered faster and accurately. Momentum RIP processes the following file formats natively:

- PDF 1.7 PDF/X-1a, PDF/X-3 and PDF/X-4
- XPS v.1.0 (XML Paper Specification)
- PostScript Language Level 3, TIFF 6, EPS, DCS, JPEG, GIF



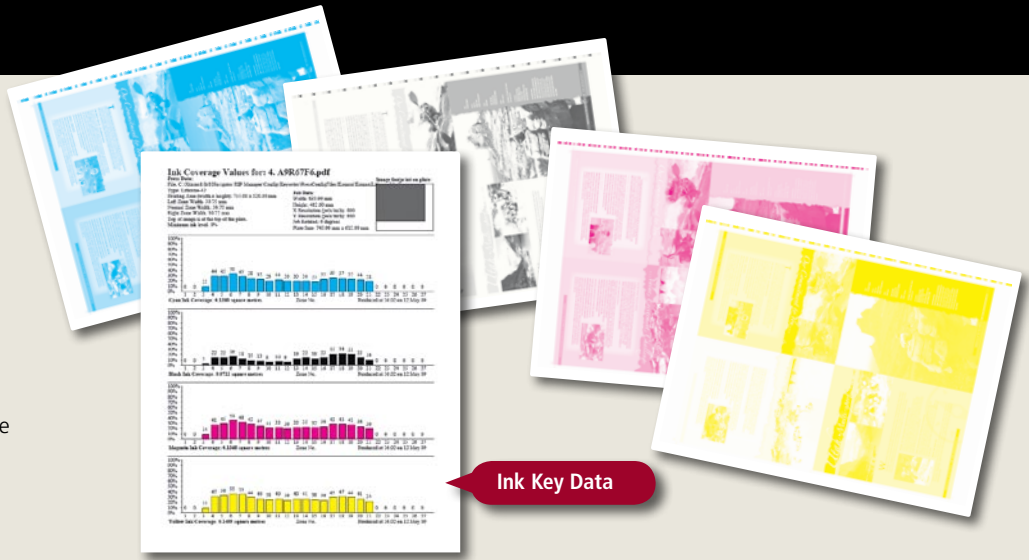
Job Manager

Page Setup Editor



Keysetter Option

Keysetter is ideal for conventional offset presses that do not utilize a press console for setting ink keys. Keysetter generates a pdf file with ink key data so that the press operator can accurately set the ink keys for each print job. A press configuration file is generated for each press indicating number of keys, width of coverage per ink zone and plate margin information. Keysetter reduces makeready time and improves pressroom productivity.



Printing to Laser Printers/Email PDF

The Print Job module allows printing to any laser printer within the workflow. This can be useful for intermediate low-cost proofing before final production. In addition, the workflow can automatically create a low resolution PDF file that can be emailed for approval.

In-RIP Trapping Option

MTrapPro is an in-RIP trapping application that handles trapping automatically as jobs are processed through your workflow. MTrapPro uses an object-based, raster-aware engine that delivers outstanding performance. A Device-Oriented Display List generated by the Momentum determines trap positions. This allows the system to trap everything the RIP renders with pixel accuracy. MTrapPro has the features that print professionals require, including sliding traps, feathered traps, chokes super blacks, and small object protection.

Color Management/Proofing Option

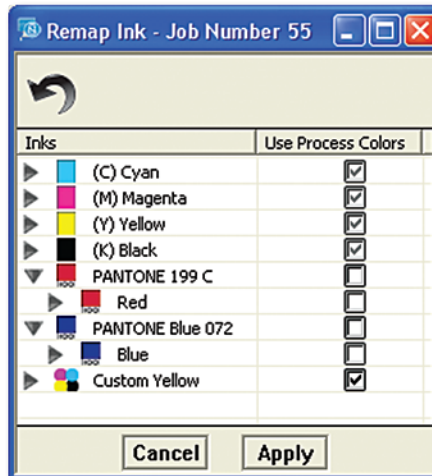
Adding an MProof plugin to the Momentum helps ensure data integrity by using the same RIP to drive your output device and proofing device. MProof provides excellent color process control, giving accurate, consistent and predictable color reproduction for a wide range of workflows. MProof includes many industry standard ICC Profiles giving you "Out of the Box" proofing standards. Importing custom made ICC profiles generated from third party profiling software is also supported.

Raster PDF Plug-in

Raster PDF is a soft proofing plug-in that provides a PDF of the raster (RIPped) file. The PDF can be rendered at either 300 or 600 dpi, allowing the PDF to be emailed to customers for viewing and approval. The customer will now be able to view the job as it was RIPped, thus providing a closer verification of the final output.

Ink Remapping Option

The Ink Remapping option provides a quick and easy way to eliminate or consolidate plates within a job. Merging plates or "remapping" is the ability to select inks (separations) in a given file and map them to an alternate separation. This feature may be used to select one or more spot colors and map them to another color or it may be used to convert spot colors to process.



Ink remapping manages the following operations:

- Merge Pantone colors. (e.g. "Pantone 185 CV", and "Pantone 185 CVC" to "Pantone 185 C").
- Convert spot colors to process.
- Map a spot to a specific process color, (e.g. "My Black" maps to process black.)
- Map a spot to another spot.

Screening

Momentum offers screening technology that is designed to resolve quality issues faced by the prepress and printing industry. The standard AM screening is based on Harlequin Precision Screening (HPS) and provides high resolution output up to 300 lines per inch.

The optional FM screening is based on Harlequin Dispersed Screening (HDS). HDS screening creates reproductions with increased sharpness over AM Screening and offers relief from cross screens and object moiré. It addresses many of the deficiencies other FM screening techniques suffer from, and provides a robust screening solution for a variety of printing situations.

Impose Module with inpO2 Option

Momentum's integrated imposition option provides greater control over imposed jobs within the workflow. It includes Dynagram's powerful inpO2 imposition solution. inpO2 allows you to increase your productivity with a powerful and scalable PDF imposition software, built right into the familiar environment of Adobe Acrobat. inpO2 provides the features and functionality commercial printers require with PDF workflows (requires Adobe Acrobat 8 or higher).



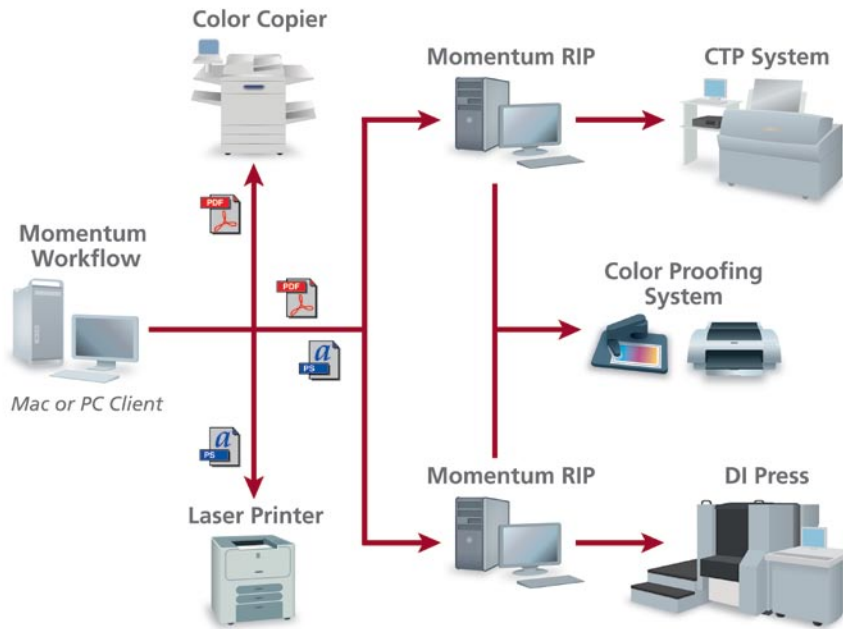
Momentum Pro

- Affordable solution for today's printers
- Optimize production in your prepress operation
- High productivity PDF workflow
- Easy-to-use tools
- Flexible, versatile job management, proofing, RIP, and archiving in one package



Service and Support

Presstek is committed to providing you the highest levels of service and support for your Presstek products. Presstek's unparalleled expertise in laser imaging technology combined with our extensive service experience brings you the leading support in the industry. Expert installation, training and maintenance will support your investment, so it will pay dividends quickly and reliably for years to come.



Momentum Pro Specifications

PDF Tools	PDF Creation, Preflight, Action Lists, Certified PDF
Client/Server Technology	Includes two clients license Additional licenses can be purchased up to a maximum of ten
Multiple RIP Support	Includes support for one RIP Additional RIP support can be purchased up to a maximum of three
RIP Technology	Harlequin version 8
In-RIP Trapping	MTrapPro (option), Trap Zone support with PDF files
Input Formats	Postscript, PDF 1.7, EPS, Tiff 6.0, 1-Bit Tiff
Output Formats	Presstek Dimension and Vector FL52 CTP Systems, Presstek DI presses, Presstek enabled DI presses, ABDick DPM CTP series, 1-Bit Tiff, 8-Bit Tiff, QMDI Ink Key Files, CIP3 (option), Raster PDF
Screening	AM Screening based on Harlequin Precision Screening FM Screening based on Harlequin Dispersed Screening (option)
Color Management	MProof with enhanced GUI support for N-Color and gray profiles, import ICC profiles, and includes industry standard ICC profiles
Printer Connectivity	Epson plug-in support, 1-Bit and 2-Bit EDS screening, device drivers available for Epson 4000, 4800, 7600, 7800, 9600, 9800, 4880, 7880, 9880, 7900, 9900. Other device drivers are also available.

Product information and specifications are subject to change without notice.

For more information about Presstek Products:

Presstek, Inc.

55 Executive Drive
Hudson, NH 03051 USA
Tel: 603-595-7000
www.presstek.com



Printed with Presstek chemistry-free digital offset technology on Chorus Art 100lb. Silk Cover. Chorus Art stock contains 50 percent recycled fiber, including 25 percent post-consumer waste, and is Forest Stewardship Council certified.

Copyright © 2010 Presstek, Inc. Momentum is a registered trademark of Presstek, Inc.

All other tradenames are the property of their respective owners.

9-2630 7/10 R1