

Canon

imageRUNNER®
2530 / 2525

multifunction
compact design
black-and-white printer
color scanning


OFFICE SOLUTIONS





At-a-Glance





imageRUNNER® 2530 / 2525

 Copy/Print/Send/Fax*

 Up to 11" x 17"

 Up to 1200 x 1200 dpi

 Black and White

 Color Scanning

Powerful performance

- > Robust imageCHIP LITE system architecture
- > 512MB RAM
- > Standard Ethernet and USB 2.0 High Speed

Impressive speed

- > Up to 30/25 ppm printing (BW; Letter)
- > Up to 35/25 ipm scanning at 300 dpi (BW/Color*)

Outstanding paper handling

- > Standard dual 550-sheet cassettes with auto paper size detection
- > 100-sheet stack bypass tray
- > Envelope-feeding cassette option
- > Up to 2,300-sheet maximum paper capacity

Space-saving finishing

- > Compact internal finisher option
- > Multiposition 50-sheet stapling
- > Maximum 1,100-sheet output capacity

* Send/Fax functions are optional.

A reliable way to elevate your document workflows. Compact productivity that's dependable and easy to use.

Powerfully simple

Designed to meet the unique needs of small- to mid-size workgroups, the Canon imageRUNNER 2530/2525 models deliver high-quality output and available color scanning combined with optional sending and finishing capabilities that are easy for anyone to use. Rather than having to choose between a single-function printer and an MFP with features you don't need, the Canon imageRUNNER 2530/2525 models include just the right mix of performance and productivity in a configuration that fits your requirements—today and tomorrow.

Dependable performance

The imageRUNNER 2530/2525 models provide out-of-the-box productivity for users to achieve fast output and optional color push scanning. Productivity is king, which is why the systems have been built to last with significantly less maintenance—meaning less interruption to your business. Long-life components, generous paper capacity, and high-yield consumables dramatically increase system uptime so you can focus on your work rather than attending to the MFP.

Small size, big productivity

Big capabilities in a compact size make the Canon imageRUNNER 2530/2525 models an ideal choice for small offices, front desks, remote locations, and groups of corporate users. Innovations in print engine design, document feeding, and internal finishing mean you'll also save precious space while unleashing workflow productivity in ways that were previously out of reach.

Do more with less

Lower IT costs and reduce the burden of managing your systems with Canon's powerful centralized management tools and remote access utilities. Administrators can easily control any number of Canon MFPs throughout the enterprise by distributing system settings, maintaining security privileges and monitoring system status and usage.

Even greener

Canon's commitment to protecting and sustaining the environment is stronger than ever. All new imageRUNNER systems incorporate environmentally responsible technologies that further conserve energy and resources, reduce CO₂ emissions, and help prevent pollution throughout the entire product life cycle.



UNCOMPLICATED PERFORMANCE

Seize the features you need without sacrificing your valuable space—or budget.

Compact yet powerful

Built on an updated version of the imageCHIP LITE platform that's more powerful than predecessor systems, the Canon imageRUNNER 2530/2525 models have ample RAM, built-in Ethernet, and USB 2.0 connectivity. They also provide proven Canon performance for handling concurrent print, copy, scan, fax, and send jobs.



imageCHIP LITE system architecture

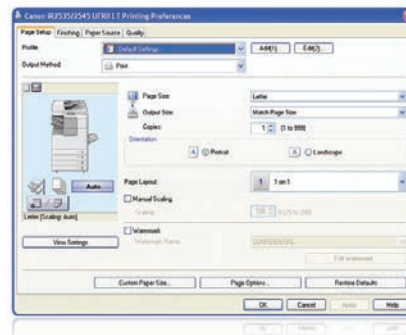
Spend less time loading paper with two standard 550-sheet paper cassettes that can automatically detect paper size, a 100-sheet multipurpose tray for additional media, and options for up to 2,300-sheet paper capacity. For more advanced paper handling without sacrificing additional space, the optional internal finisher quickly and automatically produces stapled documents to save you time while producing professional output. Good things really do come in small packages.

Intuitive interface

The imageRUNNER 2530/2525 models proudly feature a large 5.7" high-contrast monochrome LCD touch-screen, a unique usability feature for this class. From the first touch, users will appreciate its ease of operation and responsiveness, while business owners will appreciate increases in employee productivity.

Flexible printing options

The Canon imageRUNNER 2530/2525 models can output crisp documents with true 1200-dpi accuracy. Each system includes support for Canon's innovative UFR II LT print technology with optional PCL 5e/6 and PostScript® 3™ emulation on Windows® and Macintosh® workstations. The intuitive print driver is so smart that it can recognize the capabilities of each system and provide users with only the available options. The Series also supports printing from Citrix® and SAP® business environments.*



Driver user interface

High-quality color scanning

For everyday copies or scans, users can scan individual pages on the platen glass or quickly tackle a stack of single- or double-sided originals using the optional 50-sheet Duplexing Automatic Document Feeder. The color scanning unit uses a compact and lightweight high-precision reader that makes crisp, clear reproductions.



Quick Access Buttons

Copy, Send, and Scan/Options buttons accelerate common workflows without having to navigate layers of screens.



DADF

The optional DADF quickly scans up to 50 documents in black and white or color.

Document distribution**

Increase your productivity with color sending capabilities that enable your imageRUNNER 2530/2525 models to electronically distribute documents or save them to removable media. The systems support popular formats including TIFF, JPEG, PDF, PDF High Compression, and Searchable PDF.

Send. Easily distribute documents to e-mail, fax, I-fax, SMB, and FTP destinations, and even facilitate delivery to back-end applications and document management systems at the touch of a button.

Fax. Short on office space, but still need to fax? Consolidate your fax needs with your print, copy, and scan technology to save space and operating costs. Canon has you covered with the available fax option, so you can send and receive faxes at the imageRUNNER system. You can even send and receive paperless faxes at your networked computer, saving time and paper costs.

USB Support. The systems also go beyond traditional printers by supporting USB devices, such as memory media, keyboards, and authentication card readers. Each system includes one port as standard, or you can connect up to three devices with an optional USB hub.



Optional USB hub

High reliability

Remote offices need reliable equipment since they may not be easily accessible by support professionals. Likewise, larger offices are trying to trim costs and reduce demands on IT staff. The imageRUNNER 2530/2525 models make it easy for organizations of any type and size to consolidate systems for easier maintenance and management through highly durable components and remote administration capabilities.

Long-life consumables

The imageRUNNER 2530/2525 models deliver a lower total cost of ownership through the high-yield imaging drum and toner, both of which are specifically designed for longer continuous operation. Canon's long-life drum technology also allows you to achieve more uptime, higher productivity, and better quality copies and prints. And with the ability to replenish toner on-the-fly, copy and print jobs run with less interruption since there's no need to stop to add toner.



Front-Load access to toner cartridges

Expandable features

Organizational goals and requirements change over time, which is why the imageRUNNER 2530/2525 models have been designed to provide an easier upgrade path to enhanced features. Instead of being locked into a system that's only good for today, Canon embraces growth by enabling new software and hardware capabilities to be installed when they're needed.

* Check with SAP for device availability.

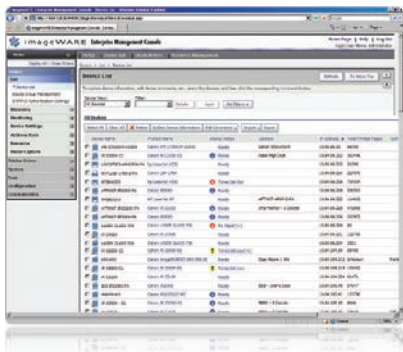
** Requires the optional Color Send Kit-Y1. PDF High Compression and Searchable PDF modes require the optional Color Send Kit-Y1 and Searchable PDF Kit-C1.

ALLOCATE YOUR RESOURCES WISELY

Streamlined administration saves precious time.
Advanced technologies spare the environment.

Centralized control

Whether you're managing one imageRUNNER system or an entire fleet, Canon can help make it easier. Users and administrators can securely access the system over the network via a standard Web browser through the Remote UI interface. Larger numbers of imageRUNNER systems can be efficiently managed via the complementary imageWARE Enterprise Management Console Web-based application. Regardless of the method, managers can view system and consumables status and usage, and adjust configurations from across the network as needed. Canon's Generic PCL 6 driver also simplifies management, giving IT administrators a single driver that supports multiple Canon systems to help drive cost out of IT operations.



imageWARE Enterprise Management Console

Enhanced security and authentication

Protecting all connected devices on the network is important, which is why Canon has provided the ability to limit access to the system and its features to only authorized users. For enhanced security, access can be controlled using Canon's uniFLOW Output Manager. To simplify secure access even further, uniFLOW can also be combined with a USB-based proximity card solution. Additionally, the imageRUNNER 2530/2525 Series can perform all its powerful functions without an internal hard disk drive, thus eliminating concerns over confidential data retained on the MFP.



Eco-Conscious

As an industry leader in environmental responsibility, Canon is a partner to help achieve your green-conscious goals. The imageRUNNER 2530/2525 models are remarkably energy efficient, using approximately 1W of electricity in Sleep Mode. Yet Canon's technology can warm up quickly from this point to combine high productivity with minimal energy usage. With standard support for duplex and N-up printing, these systems can easily save on the cost of consumables. From responsible manufacturing and smart transportation to reduced energy use and long-life consumables, Canon is dedicated to being a friend to both the environment and your budget.



Enhance your productivity with an array of optional accessories.

Paper Handling Options

DADF-AB1*

- 50-sheet capacity

Platen Cover Type P*

Finishing Options

Inner 2-Way Tray-G1*

- 100-sheet capacity on upper tray
- 250-sheet capacity on lower tray



Inner Finisher-B1*

- 1,000-sheet capacity
- Corner and double stapling up to 50 sheets

Inner Finisher Additional Tray-B1

- Additional 100-sheet capacity in upper output tray
- Installed in combination with Inner Finisher-B1

Connectivity Options

PCL Printer Kit-AF1

PS Printer Kit-AF1

Barcode Printing Kit-B**

Color Send Kit-Y1

Searchable PDF Kit-C1*

Super G3 Fax Board-AG1

USB Application 3-Port Interface Kit-A1

Paper Feeding Options

Cassette Feeding Unit-AE1*

- 550-sheet x 2-cassette capacity
- 17 lb. Bond to 24 lb. Bond
- Supports up to 11" x 17"

Cabinet Type-C*

Other Paper Feeding Options

Envelope Feeder Attachment-D1**

- 50-sheet capacity
- Supports COM10 No.10, Monarch, DL, ISO-B5, ISO-C5



Accessibility Options

ADF Access Handle-A1

Braille Label Kit-F1



- The DADF-AB1 or Platen Cover Type P must be installed with the main unit.
- * Inner 2-Way Tray-G1 cannot be installed with Inner Finisher-B1.
- ** Requires the PCL Printer Kit-AF1.
- ▲ Requires Color Send Kit-Y1.
- ◆ The Cassette Feeding Unit-AE1 and Cabinet Type-C cannot be installed at the same time.
- ◆◆ Installs on the second paper cassette.

Note: For additional options and specifications, please refer to the back page.

Product Specifications

Main Unit

Operation Panel

5.7" QVGA Black-and-White LCD Touch-Screen

Memory

Standard: 512MB RAM

Maximum: 512MB RAM

Network Interface Connection

Ethernet 10/100Base-TX

Other Interface

Standard: USB 2.0 (Host)x1, USB 2.0 (Device)x1

Optional: USB 2.0 (Host)x3 (USB Application 3-Port Interface Kit-A1), Serial Interface, Copy Control Interface

Copy/Print Speed (BW)

Letter: 2530: Up to 30 ppm
2525: Up to 25 ppm

Legal: Up to 13 ppm

11" x 17": Up to 15 ppm

First-Copy-Out Time (Letter)

5.4 Seconds

Paper Sources (20 lb. Bond)

Standard: Dual 550-sheet Paper Cassettes
100-sheet Stack Bypass

Optional: Dual 550-sheet Paper Cassettes

Maximum: 2,300 Sheets

Output Paper Capacity (20 lb. Bond)

Standard: 250 Sheets (Inner Tray)

Maximum: 1,100 Sheets (w/Inner Finisher-B1 and Inner Finisher Additional Tray-B1)

Output Paper Sizes

Cassette 1/3/4: 11" x 17", Legal, Letter, Letter-R, Statement-R, Executive

Cassette 2: 11" x 17", Legal, Letter, Letter-R, Statement-R, Executive, Envelopes (COM10 No.10/ Monarch/DL/ISO-B5/ISO-C5)*

Bypass: 11" x 17", Legal, Letter, Letter-R, Statement-R, Executive, Envelopes (COM10 No.10/ Monarch/DL/ISO-B5/ISO-C5), Custom Size (3-15/16" to 11-11/16" x 5-7/8" to 17" [99mm to 297mm x 148mm to 432mm])

Acceptable Paper Weight

Cassette: 17 lb. Bond to 24 lb. Bond (64 to 90g/m²)

Bypass: 17 lb. Bond to 34 lb. Bond (64 to 128g/m²)

Duplexing

Paper Size: Standard, Automatic Trayless Duplexing (Executive to 11" x 17")

Paper Weight: 17 lb. Bond to 24 lb. Bond (64 to 90g/m²)

Warm-up Time

From Power On: 30 Seconds or Less
From Sleep Mode: 1 Second or Less

Power Requirements/Plug

120V AC, 60Hz, 6.9A/NEMA 5-15P

Dimensions (H x W x D)

35-1/4" x 22-1/4" x 27-1/4"
(896mm x 565mm x 693mm) (with DADF)

31-3/4" x 22-1/4" x 26-3/4"
(806mm x 565mm x 680mm) (with Platen Cover)

Installation Space (W x D)

42-1/2" x 56-3/4" (1079mm x 1441mm)
(with no optional equipment attached)

54" x 56-3/4" (1371mm x 1441mm)
(with optional Inner Finisher-B1 attached)

Weight

Approximately 156 lb. (70.7kg) (Main Unit)**
Approximately 172 lb. (78kg) (with DADF)**

Toner (Estimated Toner Yield)

14,600 Images @ 6% Coverage

Document Feeder (Optional)

Scan Method

Duplexing Automatic Document Feeder

Acceptable Originals

Paper Size: 11" x 17", Legal, Letter, Letter-R, or Statement

Scan Speed (BW/Color; Letter)

2530: Copy: 25 ipm (600 dpi)
Scan: 35/25 ipm (300 dpi)

2525: Copy: 25 ipm (600 dpi)
Scan: 35/25 ipm (300 dpi)

Paper Capacity (20 lb. Bond)

50 Sheets

Print Specifications

Engine Resolution

1200 x 1200 dpi (Maximum)

PDL Support

Standard: UFR II LT

Optional: PCL 5e/6, PostScript 3 Emulation

Print Driver Supported OS

UFR II LT, PostScript 3 Emulation: Windows® (Windows 2000/XP/Vista®/Windows 7/Server 2003/Server 2008), Citrix Presentation Server 4.0/4.5, Citrix XenApp 5.0, XenDesktop 2.0/2.1/3.0, Macintosh® (OS X 10.6.1), SAP (PS3 Only)

PCL 5e/6: Windows (Windows 2000/XP/Vista®/Windows 7/Server 2003/Server 2008), Citrix Presentation Server 4.0/4.5, Citrix XenApp 5.0, XenDesktop 2.0/2.1/3.0, SAP

Color Send Specifications (Optional)

Sending Method

E-Mail, I-Fax, File Server (FTP, SMB), Super G3 Fax (Optional)

Scan Resolution (dpi)

600 x 600, 400 x 400, 300 x 300, 200 x 400, 200 x 200, 200 x 100, 150 x 150, 100 x 100

Communication Protocol

File: FTP (TCP/IP), SMB (TCP/IP)

E-Mail/I-Fax: SMTP, POP3, I-FAX (Simple)

File Format

TIFF, JPEG, PDF, PDF (Compact), PDF (OCR)***

I-Fax Data Format

TIFF (MH)

Fax Specifications (Optional)

Number of Connection Lines

1 (Maximum)

Modem Speed

Super G3: 33.6 Kbps

G3: 14.4 Kbps

Compression Method

MH, MR, MMR, JBIG

Sending/Recording Size

Statement-R to 11" x 17"

Fax Features

Job Forwarding, Different Size Originals, Sharpness, Delayed Send, Finished Stamp, Two-sided Original

Security Specifications

Department ID Management, User ID Management, IPv6, Restricting Features (Restricting the Send Function, Restricting New Address on Address Book, Address Book Password, Allow Fax Driver TX, Restrict Recall, Confirm Entered Fax Numbers, Restrict Sequential Broadcast), SNMPv1, MAC/IP Address Filtering, SMTP Authentication, POP Authentication before SMTP

Other Optional Accessories

- USB Keyboard
- Document Tray-J1
- Card Reader-E1†‡
- Card Reader Attachment-D3
- Copy Control Interface Cable-A1‡

Note: Please see Page 7 for more optional accessories.

* The optional Envelope Feeder Attachment-D1 is required.

** Includes consumables.

*** The optional Searchable PDF Kit-C1 is required. † Requires the Card Reader Attachment-D3 for installation.

‡ Card Reader-E1 and Copy Control Interface Cable-A1 cannot be installed at the same time.

image*ANYWARE*

1-800-OK-CANON
www.usa.canon.com

Canon U.S.A., Inc.
One Canon Plaza
Lake Success, NY 11042

As an ENERGY STAR® Partner, Canon U.S.A., Inc. has determined that these products meet the ENERGY STAR guidelines for energy efficiency. ENERGY STAR and the ENERGY STAR mark are registered U.S. marks. CANON, IMAGERUNNER, and the GENUINE logo are registered trademarks of Canon Inc. in the United States and may also be registered trademarks or trademarks in other countries. IMAGEWARE is a trademark of Canon U.S.A., Inc. in the United States and is a trademark of Canon Inc. in certain other countries. IMAGEANYWARE is a trademark of Canon. All other referenced product names and marks are trademarks of their respective owners and are hereby acknowledged. Some items may not be available at this time; please check for availability. Specifications and availability subject to change without notice.

©2010 Canon U.S.A., Inc. All rights reserved.

0142W937
0410-2530/2525-50M-LMC

