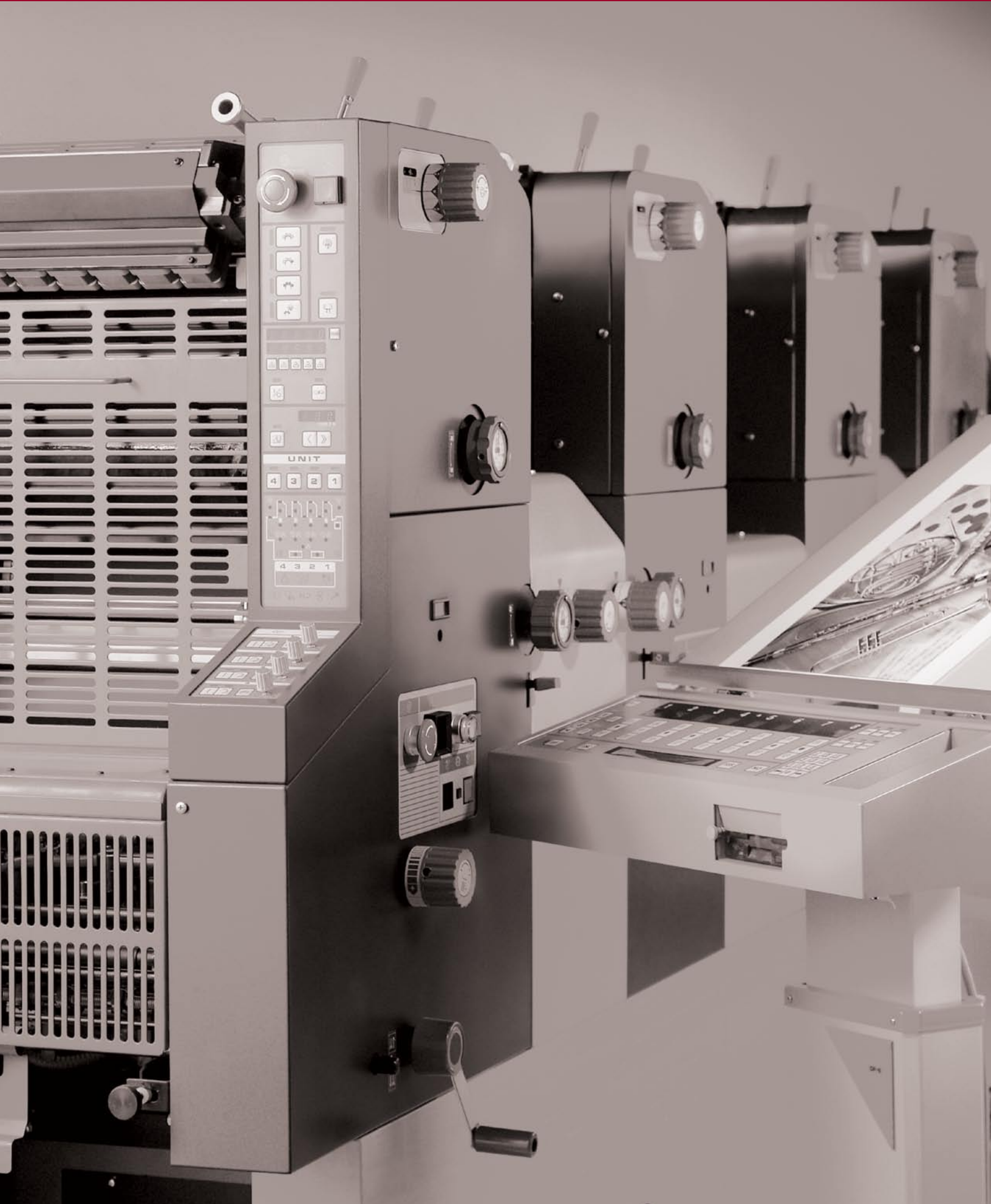


ABDick 4995A-ICS 4-Color Offset Press



MEETING OUR CUSTOMERS' DEMANDS SO THEY CAN MEET THEIRS

Short-run, multi-color printing is highly requested in today's market; so an easy-to-use, economical four-tower press that delivers excellent printed results has become a necessity.

The 4995A-ICS was developed in response to the market's demand for a portrait-format, four-color performance offset press—one that's suitable for short and long runs, easily handles economical polyester-based plates, as well as metal, and runs a wide variety of stocks via a vacuum-enabled stream feeder.

All types of full color projects can be delivered—easily and cost-effectively.

Numerous features and automated functions simplify operation, reduce make-ready time

and enhance productivity while producing the high-quality prints your customers will appreciate. Digital compatibility assures its place in electronically enhanced workflows.

The inclusion of the four-tower ABDick 4995A-ICS Offset Press to our product line demonstrates our continued commitment to providing high quality equipment that meets the ever-evolving needs of our customers.

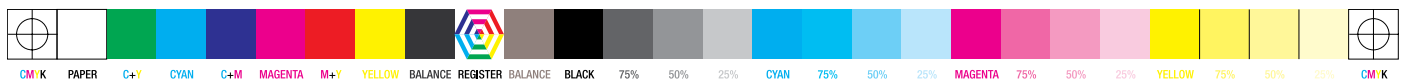
Contact your Presstek representative or call 603-595-7000 x3599 today to learn more about how the 4995A-ICS can become a valuable asset to your shop.



Professional features such as semi-automatic plate changing and the computerized Ink Control System (ICS) help efficiently manage the increasing amount of multi-color work.



*ABDick 4995A-ICS 4-Color Offset.
You'll find there's a lot of value in the differences this press has to offer!*



STANDARD FEATURES - ABDICK 4995A-ICS FOUR-TOWER OFFSET PRESS

- Ink Control System (ICS)
- Stream Feeder
- Vacuum Conveyor
- Vacuum Pull Guides
- Pre-Pile with 29" Capacity
- Semi-Automatic Plate Insertion
- Motorized Continuous Film Dampening System
- Chiller/Recirculator
- Paper Path Setup Software
- Straight-Edge Plate Clamp with Positioning Pins
- Predetermined Cylinder Position Stop
- Quick-Release Blanket Holders
- Micro-Processor Controlled Cycles
- Stepless Inking; 16-Roller Ink System (3 Form Rollers)
- Ink Roller Clean-up Attachment
- Diagonal Sheet Adjustment of Paper Feed Drum On-The-Fly
- Lateral Image Adjustment On-The-Fly
- Micro Dial-Type Lateral and Vertical Image Adjustment Devices
- Machine Status Monitor; LCD
- Double Sheet Detection (Mechanical)
- Paper Jam Detection
- Chain Delivery with Delivery Pile Automatic Lowering
- Delivery Table Lower Limit Switch
- Delivery Decurling Device with Vacuum Sheet Brake
- Powder Spray
- Automatic Blanket Cleaning
- Print Counter (Total Printed Sheets, 8-Digit, Non-Resettable)
- Preset Repeat Counter with Batch Function (Electronic, 5-Digit)
- Machine Counter (Total Machine Rotations, 8-Digit, Non-Resettable)
- Centralized Lubrication System
- Card Guide
- Paper Feed Table (x2)
- Delivery Table Dolly (x2)
- Emergency Stop Buttons
- Safety Covers
- Cylinder Gap Safety Bars
- Blanket Wash Plunger Can
- Compressor for Air Cylinder
- Oil Pan
- Operator Tools
- Work Organizer

OPTIONAL ACCESSORIES

- Ink Volume Setter (IVS) Software
- High-Precision Optical Register Punch
- Video Plate Punch
- Infrared Dryer with Powder Spray Attachment
- Quick-Release Blanket and Packer
- No-Mark Anti-Tracking System
- Super Blue Anti-Tracking System
- Tape Inserter

BUY SUPPLIES ONLINE! IT'S FAST, SECURE AND AVAILABLE 24/7

Visit us at shop.presstek.com to purchase supplies for your 4995A-ICS press as well as a wide range of additional pressroom supplies, parts and small equipment products.

It was customer feedback that led the way for Presstek to develop this new method of doing business in this digital, deadline-oriented world. So we know it will be a valuable resource for your printing operation.

Shop and order at your convenience, 24 hours a day, 7 days a week. And, use a payment method that's right for you—major credit card or Presstek account.

When visiting (whether registered or not), you can browse the product catalog to find what you need and place orders.

shop.presstek.com

The catalog is divided into well-defined sections and products are easily identified—making the search for supplies, parts and other products an easy one.

Logging in as a registered user gives you additional benefits such as customer-specific pricing, promotional offerings and the ability to build a custom 'My Supply List' for easy future orders.

If you're new to purchasing online, or doing business with Presstek, see our FAQ section. It covers a wide range of topics about the complete ordering process.

We've also included a 'Contact Us' form that lets you send us comments or questions. We'll reply quickly.

Visit shop.presstek.com today, and see how we're making life a little easier for our valued customers.

PRESSTEK NATIONAL SERVICE

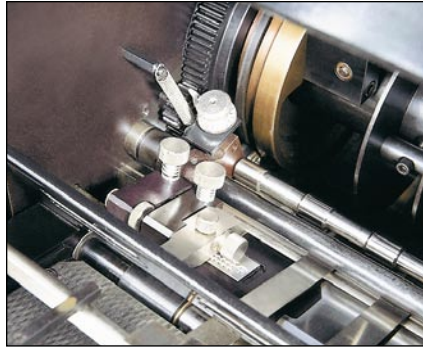
Our strong brand recognition in the printing industry results from our commitment to being a total solution provider and our insistence on a high level of customer satisfaction.

With an average experience level of over 27 years in the field, we are armed with a unique capability for servicing the gamut of printing equipment—from prepress to direct imaging, press to finishing—while providing customers with reliable, efficient service through improved processes.

We offer flexible service options to meet specific customer requirements and can service our equipment brands as well as others'. Our national service presence means fast response times and a diversified knowledge base of factory trained and certified field engineers means we have the technical ability to reduce your equipment downtime.



The stream feeder on the 4995A-ICS provides smooth, dependable feeding of papers ranging from onionskin to heavy card stock.



For multi-color work, the vacuum conveyor and pull guides ensure consistent, accurate register sheet after sheet.



With pre-pile there's no stopping to reload. The recirculator/chiller controls solution temperature to improve print quality.

STREAM FEEDING INCREASES USABILITY AND REGISTER ACCURACY FOR MULTI-COLOR APPLICATIONS

The stream feeding system on the ABDick 4995A-ICS press is beneficial to productivity, registration accuracy and ease of use.

A feature usually found on larger presses, the stream feeder is built for delivering superior quality color work; and when a higher volume of prints is called for, it efficiently handles the job.

Stream feeding sets up easily, allows a larger variety of stocks to be run and has a higher pile capacity of 29" (737 mm).

A vacuum conveyor and vacuum pull guides ensure consistent paper feeding and better sheet control with less marking. A sheet is simultaneously held down by a vacuum and pulled by the guide for positive alignment. Register is accurate even on lighter stocks at high speeds.

Automatic sheet positioning and head stops ensure proper sheet position for guide adjustments and quick setup.

The pre-piling feature enhances productivity by allowing paper to be preloaded while the machine continues to run. It's ready to go again when the last sheet of the first stack is fed.

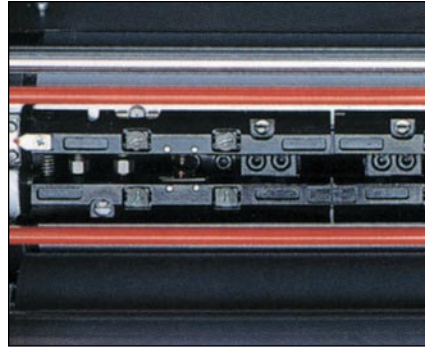
Multiple sensors on the mechanical doubles detection system monitor paper travel. If a paper jam or double sheet is detected, the press shuts down automatically and the operator can view the source of paper trouble on an LCD. Also, sheets on the conveyor are automatically stopped from advancing by jam plungers.



4995A-ICS Offset Press with Ink Control System Console



Semi-automatic plate loading increases accuracy thereby reducing the amount of registration adjustments.



Straight-edge clamps with positioning pins secure the plate in position. It's then loaded with the touch of a button.



Many operational functions are performed from conveniently placed control panels for simple, user-friendly operation.

FAST, RELIABLE MAKE READY

The 4995A-ICS includes a high quality hand-operated register plate punch as standard equipment.

For those who wish to upgrade, two models are available: the high-precision optical register punch or the video plate punch. Both of these options are designed to further increase accuracy to reduce the time required for make ready.

Semi-automatic plate insertion significantly improves plate handling and simplifies operation. Automating this function ensures greater accuracy and lessens operator intervention and results in reducing the time associated with making registration adjustments on press.

Plate mounting is now performed by simply inserting a plate into the plate clamps and pushing a button. Polyester or metal printing plates are loaded into proper position and tensioned by a pneumatic system.

Pre-tensioned, straight-edge plate clamps with positioning pins secure the plate reliably and precisely. Springs in the clamp system allow optimal tension for type of plate material being used which helps prevent plate stretch.

If necessary, slight diagonal image adjustments can be performed by simply turning a knob on the plate clamp.

In addition, plates can be removed quickly and easily – with no tools.

HANDY CONTROL PANELS, PUSH BUTTONS SIMPLIFY OPERATION

Ease of use and operator comfort are assured with lever-free operation.

Push-button controls are concentrated at the delivery side which minimizes operator movement to allow more time for focusing on print quality. An additional control panel at the feeder furthers convenience and productivity.

Printing unit selection, press speed, and dampening solution supply volume can all be set via the control panel.

Inking functions and switching the water form roller on and off are also done simply by pushing buttons.

After make ready, printing begins by simply pushing the production button from either control panel which activates pumps, paper feed and the gradual acceleration to the desired press speed.

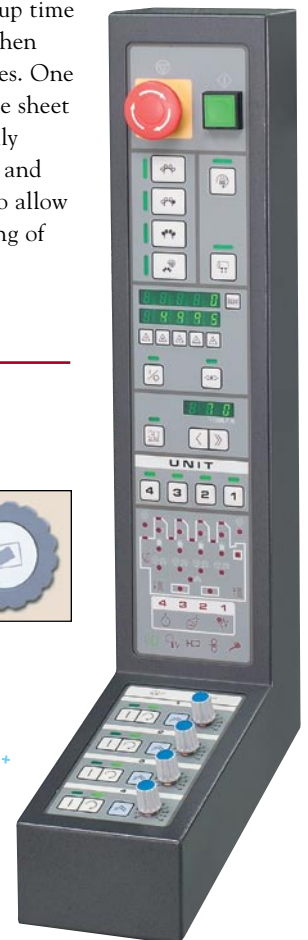
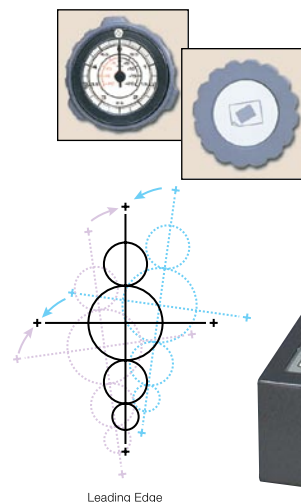
A handy paper size change button reduces setup time and paper waste when changing stock sizes. One touch feeds a single sheet which automatically stops at the feeder and delivery sections to allow quick, easy resetting of the paper guides.

EASY ADJUSTMENTS ENSURE EXCELLENT REGISTRATION

The micro dial-type image adjustment device provides precise vertical (± 20 mm, $\pm .79$ ") and lateral (± 2 mm, $\pm .079$ ") control of the print image position which significantly reduces the time and effort required for registration.

Lateral adjustments can be made on-the-fly for increased productivity.

A unique sheet skewing device further enhances register accuracy. Diagonal micro-adjustments (up to ± 0.5 mm) can be made quickly without having to stop the press.



SATELLITE V-SHAPED 5-CYLINDER SYSTEM PROVIDES STABLE AND RELIABLE MULTI-COLOR PRINTING

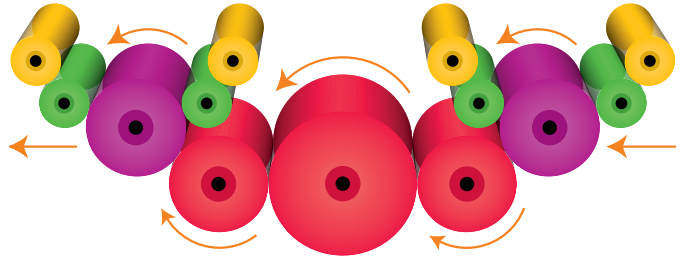
A simple mechanism links two sets of 2-color printing units—each a satellite V-shaped 5-cylinder system—via two impression cylinders and a transfer drum.

Sheet register is controlled by double sprung grippers on the paper feed drum, impression cylinders and transfer drum which firmly grip the paper. Even during high-speed and heavy solid printing, precise registration accuracy is maintained.

Separate blanket cylinders prevent ink migration for consistent color throughout the print run.

Quick-release aluminum blanket holders allow press blankets to be changed in much less time than conventional punched blankets.

Once printing has been completed, automatic blanket cleaning can be performed on all four printing units simultaneously for easy maintenance.



CONTINUOUS MOTORIZED FILM DAMPENING SYSTEM

The flexible continuous motorized film dampening system enables precise regulation of dampening solution supply volume to match paper stock, ink, plate materials and environmental conditions for excellent printed results.

The 6-roller configuration, including a motor-driven fountain roller and two modes of pre-wet cycles, supplies an optimal water film to match the plate material (metal or polyester), delivering stable quality from the start of printing.

A pre-wet button lets the operator apply quick bursts of additional moisture to the plate surface on demand. This is helpful during start up when running polyester plates and for cleaning up plates quickly.

Moisture level sensors monitor dampening solution, and when necessary, automatically shut off the dampener motor and paper feed and lights an indicator. Moisture rollers can be run at a slow speed for setting metering roller squeeze and unit maintenance.

A chiller/recirculator unit delivers full performance from the continuous dampening system and makes it particularly suited for polyester plates. Cooling slows evaporation of solution from rollers for simpler operation and better printed results.

Water rollers can be simultaneously cleaned with the ink rollers via the bridge rollers to simplify clean-up.



Achieve excellent results with polyester or metal plates.

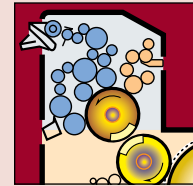


A uniform dampening supply to the plate surface enables sharper halftones, glossy solids and detailed fine text.



The ink system provides superior screen quality as well as the ability to print large, dense solids over the maximum printing area.

INK SYSTEM DELIVERS EXCEPTIONAL



A 16-roller inking system, including three ink form rollers of differing diameters, provides superior screen quality as well as the ability to print large, dense solids. The Ink Control System (ICS) lets the operator 'dial-in' the ink feed rate for precise image coverage needed.

This system features ink ductor roller shut off. In automatic mode, the ink ductor roller operates only while printing. When the 'on' button is depressed, it operates continuously.

The drop-down ink fountain and ink roller cleanup device allow fast, easy cleaning. Ink form rollers can be released if the press is idle to increase roller life and prevent flat spots on roller surfaces.

Ink Control System (ICS)

The integrated Ink Control System (ICS) allows remote control over ink fountain keys from a stand-alone console. Computer controlled inking simplifies make-ready operations and ensures more consistent ink balance and color tones throughout the run.

CHAIN DELIVERY



The chain delivery has auto-lowering, roll-away paper tables and a capacity of 17.3" (440 mm). When the table limit is reached, paper feed shuts off automatically so the stack does not overload. A vacuum sheet brake and decurling device stabilize paper delivery even during high-speed printing.

A powder spray attachment comes standard and separates printed sheets to keep them from off-setting. Fine adjustments to the duration and area of the powder applied to the sheet are done at a control panel.

The air knife feature applies an automatic, timed burst of air to each sheet of paper, eliminating paper curl. This is especially effective when printing on lighter weight paper stocks.

OPTIONAL ACCESSORIES ENHANCE PRODUCTIVITY AND QUALITY

Anti-tracking systems eliminate the markings that guide wheels on sheet-fed presses can sometimes cause. They reduce spoilage and allow the use of a wider variety of inks and coated stocks. Presstek offers a choice of anti-tracking systems as optional equipment.

The optional infrared/dry powder spray system is engineered to eliminate off-set and promote much faster drying for same-day finishing and faster turnaround. The consumption of powder spray is also reduced and printing on special stocks such as plastic film is enabled.

Optimum infrared performance is attained with a full range of preset intensities which makes it easy to adjust for variations in paper stock, weight, press speed and ink coverage. Infrared and powder spray can be used together or separately.



The optional high-precision optical register punch delivers increased accuracy. This lower cost unit lets the operator line up the image optically to targets on a plate.



Consider the video plate punch option for further efficiency and precision. The plate image is magnified 40x and displayed on video monitors making it easy to perfectly align register targets in a fraction of the time. It can be used with both portrait and landscape presses and accepts plates up to 22" x 29" (559 x 737 mm).

PRINTED RESULTS WITH LESS EFFORT

Once optimal ink values for a particular job are obtained, those settings can be stored on a 3-1/2" disk for easy retrieval and setup for future reprints.

Ink Volume Setter (IVS) Software

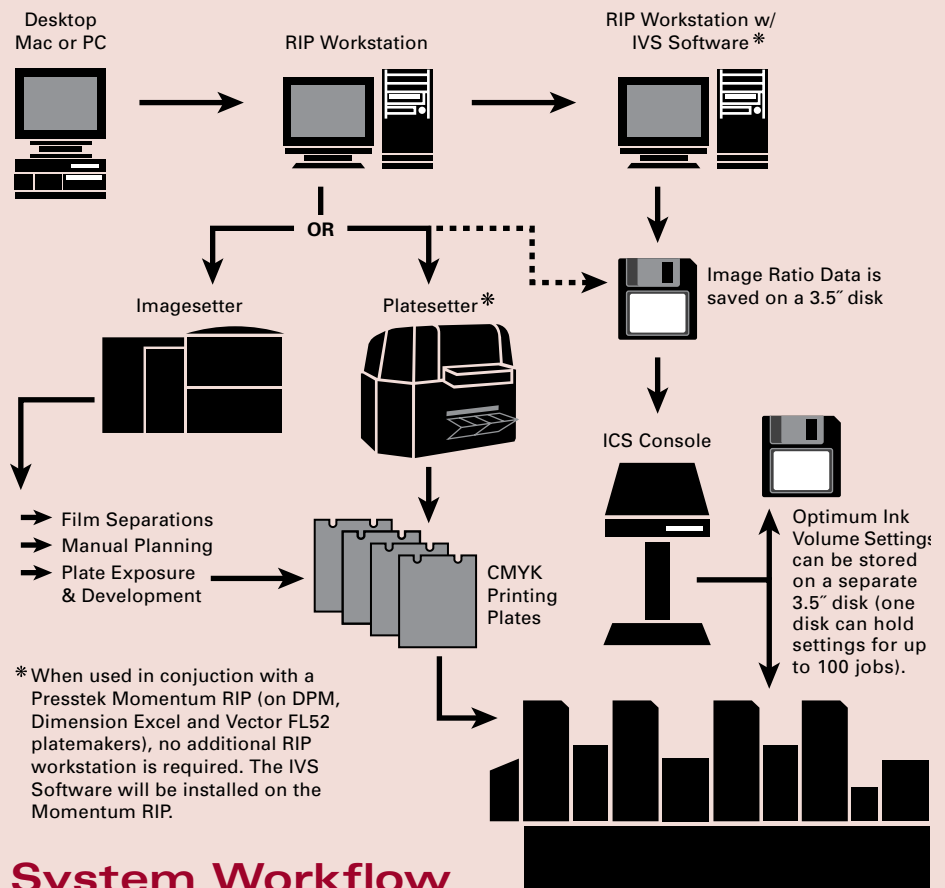
For greater workflow efficiency from pre-press to press, optional Ink Volume Setter (IVS) software provides a digital link between the



job on a desktop computer, a PostScript RIP and the ICS console. Image area ratio data taken from a document is converted into opening volumes of ink fountain keys.

After a document is RIPped, the IVS software reads the light and dark areas (pixels) in the image for each color separation then translates the values (via floppy disk) to the ICS console for pre-setting of ink fountain keys to the amount of coverage needed for that specific job.

This digital, pre-press data facilitates faster, more accurate set up and less paper waste by reducing the time and guesswork involved in setting opening volumes of ink.



ABDICK 4995A-ICS 4-Color Offset Press

SPECIFICATIONS

NUMBER OF PRINTING UNITS	Four (4)
DAMPENING SYSTEM	Continuous motorized dampening system
MAXIMUM PAPER SIZE	13.39" x 17.72" (340 x 450 mm)
MINIMUM PAPER SIZE	4.15" x 5.8" (105 x 147 mm)
PAPER THICKNESS	0.0016"-0.012" (0.04-0.3 mm)
MAXIMUM PRINTING AREA	12.99" x 17.24" (330 x 438 mm)
PRINTING SPEED	3,000-10,000 Sheets per hour Local conditions, e.g., ink, stock, plate types and printing quality required will affect the maximum printing speed.
PLATE SIZE	13.19" x 19.09" ±0.04" (335 x 485 ±1 mm) Metal plate thickness: 5mil to 8mil Polyester plate thickness: 8mil
PLATE LOADING SYSTEM	Semi-automatic plate inserter
PLATE CLAMP TYPE	Straight-edge plate clamp with positioning pins (with diagonal image adjustment knob)
BLANKET TYPE	Quick-change blanket with aluminum bar
FEEDING SYSTEM	Stream feeder
REGISTER SYSTEM	Vacuum pull guides with vacuum conveyor
FEEDER PILE SYSTEM	Pre-pile, capacity: 29" (737 mm)
DELIVERY SYSTEM	Chain delivery, capacity: 17.32" (440 mm)
NUMBER OF ROLLERS	Ink rollers: 16 (3 form rollers) per tower Water rollers: 6 (1 form roller) per tower
GRIPPER MARGIN	0.31" (8 mm)
VERTICAL IMAGE ADJ.	±20 mm (0.79")
LATERAL IMAGE ADJ.	±2 mm (0.079")
OILING SYSTEM	Centralized oiling system
POWER REQUIREMENTS	Single-phase, 220V, 50/60Hz, 30Amp
PRESS DIMENSIONS	155" L x 41" W x 63" H (3,937 x 1,041 x 1,600 mm)
ICS UNIT DIMENSIONS	28" L x 24" W x 60" H (710 x 600 x 1,530 mm)
NET WEIGHT	6,390 lbs (3,150 kg) including ICS Unit

OPTIONAL ACCESSORIES

IVS W/O RIP	Ink Volume Setter (IVS) Software Software is installed onto the Presstek Momentum RIP workstation which processes image data for use with the ICS.
IVS W/RIP	Ink Volume Setter (IVS) Software Software is installed on a stand-alone RIP workstation connected to a network which processes the image for use with the ICS.
42004	High Precision Optical Plate Punch
49001	Video Plate Punch
1-3895	I/R Dryer/Powder Spray Attachment
43461	Quick-Release Packer
43298	Quick-Release Blanket
49002	No-Mark Anti-Tracking System
42009	Super Blue Anti-Tracking System
5601	Super Blue Replacement Net
43293XC	Tape Inserter

Product information and specifications are subject to change without notice. Tradenames are the property of their respective owners. © 2010 Presstek, Inc.



SUPPLIES

SUBTRACTIVE METAL PLATES		
57527	Matte Blue 5.5mil 13-3/16" x 19-3/32" (335 x 485 mm)	Pkg 50/Pkg
59614	ABDICK 5.5mil Grained 13-3/16" x 19-3/32" (335 x 485 mm)	Pkg 100/Pkg
83-8-108561	Triton Blue SC XLR-1 8mil 13-3/16" x 19-3/32" (335 x 485 mm)	Pkg 60/Pkg
59614-1	ITEK 6MIL Grained 13-3/16 X 19-3/32 1-sided	Pkg 100/Pkg

CHEMISTRY FOR SUBTRACTIVE PLATES

57183	ABDICK Subtractive Plate Finisher	Gal	4/Cs
57184	ABDICK 2-in-1 Developer	Gal	4/Cs
KITCZ000	Triton Blue Developer/Finisher	5 Liter Bl.	4/Cs
4-1320	ABDICK Subtractive Plate Gum	Gal	4/Cs
4-9970	Metal Plate Image Remover Pen	Each	12/Cs
4-8014	Presensitized Plate Cleaner	Quart	6/Cs

POLYESTER PLATES, CHEMISTRY AND ACCESSORIES

For high quality, short-run, multi-color work, try these polyester plates and chemistries: ABDICK MEGAPlus, MEGAPro, MegaPrint or QuickSilver Next Generation. Contact your Presstek representative or visit shop.presstek.com for the correct plate product to fit your platemaking system and printing requirements.

43493	Masking Paper 13-1/2" x 19-1/2" (343 x 495 mm)	100/Box	5/Cs
-------	--	---------	------

PRESS BLANKETS

43297	Quick Release Blanket Holder (order 1 set per tower)	Each	Each
43298-P	Conventional Quick Release Blanket w/Aluminum Bar	Case	2/Cs
43456-P	Compressible Blanket (.098) 13" x 19-1/2" (330 x 495 mm)	Case	2/Cs
43457-P	Hard Blanket (.065)	Case	2/Cs
43458	Mylar Packer (.035)	Each	2/Cs
43461-P	Quick Release Packer	Case	2/Cs
4-6000	Blanket Fix 3oz	Bottle	6/Cs

INKS

PSI-DB	Pro-Set Ink Dense Black	5 lb./Can	Each
PSI-PB	Pro-Set Ink Black	5 lb./Can	Each
PSI-PC	Pro-Set Ink Cyan	5 lb./Can	Each
PSI-PM	Pro-Set Ink Magenta	5 lb./Can	Each
PSI-PY	Pro-Set Ink Yellow	5 lb./Can	Each

FOUNTAIN CONCENTRATE / ADDITIVES

4-1185	PROformace Fountain Concentrate pH 4.3-4.5	Gal	4/Cs
4-1195	Universal Fountain Concentrate pH 5.6-6.0	Gal	4/Cs
38778	MEGA CMS+ Fountain Concentrate pH 4.0	Gal	1/Cs
4-H20	Deionized Press Water	Gal	4Gal/Cse
38704	Silver-Wet Fountain Wetting Additive for MEGA Plates	Case	6/Cs

ALCOHOL / REPLACEMENT

4-1172	Isopropyl Alcohol	Gal	1/Cs
4-1177	Isopropyl Alcohol Substitute	Gal	4/Cs
4-1275	SureDot Alcohol Replacement	Gal	4/Cs
38702	Silver-Sub Alcohol Replacement	Liter	6/Cs

ETCH

4-1015	Blue Etch	Gal	4/Cs
38766	MEGA Etch	Case	6 Qts/Cs

BLANKET / ROLLER WASH

4-1235	Automatic Blanket Wash	Gal	4/Cs
4-1200	Safety Zone Blanket Wash	Gal	4/Cs
4-1238	SureDot Watermiscible Blanket Wash (Pre-Diluted)	(2) 2.5 Gal	Case
4-1248	SureDot Watermiscible Blanket Wash (Concentrated)	5 Gal	Each
4-4315	Blanket Wash	Gal	4/Cs

ROLLER MAINTENANCE SUPPLIES

36797	Cleaner Sheets 13-5/8" x 19-3/8" (346 x 492 mm)	100/Pkg	5/Cs
4-1249	SureDot Meter Water Roll Cleaner	Quart	4/Cs
83-5-101395	Chrome Cylinder Cleaner	Pint	12/Cs
4-4968	Glaze Remover	Pint	2/Cs
4-4970	Ink Roller Desensitizer	Pint	12/Cs
4-4976	Ink Roller Conditioner	16 oz/Btl	4/Cs
4-4978	Ink Roller Paste Deglazer	17 oz/Btl	6/Cs
4-4983	Ink Roller Cleaner	7 oz/Btl	6/Cs

MISCELLANEOUS SUPPLIES

3-3599	Dry Roller Lube	3Lb.	Each
4-4931-CS	Cotton Pads 4" x 4" (101 x 101 mm)	100 Wipes/Pkg	
20/Case			
4-4940	Heavy Duty Shop Towel Bundles	375/Cs	Case
4-4945	Heavy Duty Shop Towel Rolls	2 Roll/Cs	Case
4-4991	Vinyl Glove (Medium)	100/Box	10/Cs
4-4992	Vinyl Glove (Large)	100/Box	10/Cs
4-4938	Hand Cleaner	12 oz/Btl	12/Cs
4-4939	Hand Cleaner With Pump	1/2 Gal/Btl	6/Cs
4-4988	Grit Hand Cleaner	17 oz/Btl	6/Cs
4-1362	Kresto EF Hand Cleaner (250ml)	Tube	24/Cs
4-4948	Handy-Klnz Pro Premoistened Hand Wipes	72/Bucket	6/Cs
4-3800	Offset Spray Powder - 26 Micron	5 Lb.	Box
9-1003-EA	Squeeze Bottle	Bottle	24/Cs
9-2255	Stouffer 21 Step Gray Scale	Each	Each
5601	Super Blue Replacement Net	Kit	6/Kit

Some products listed above are available in larger quantities. For a complete list of 4995A-ICS Offset Press and other supplies and pressroom products, visit us at shop.presstek.com where you can browse the entire catalog and place orders 24/7.

